
Product Name: CLK2 Rabbit Polyclonal Antibody**Catalog #: APRab09049**

For research use only.

Summary

Description	Rabbit polyclonal Antibody
Host	Rabbit
Application	WB,IHC,ICC/IF,ELISA
Reactivity	Human,Mouse,Rat
Conjugation	Unconjugated
Modification	Unmodified
Isotype	IgG
Clonality	Polyclonal
Form	Liquid
Concentration	1mg/ml
Storage	Aliquot and store at -20°C (valid for 12 months). Avoid freeze/thaw cycles.
Shipping	Ice bags
Buffer	Liquid in PBS containing 50% glycerol, 0.5% protective protein and 0.02% New type preservative N.
Purification	Affinity purification

Application

Dilution Ratio	WB 1:500-1:2000,IHC 1:100-1:300,ICC/IF 1:50-1:200,ELISA 1:10000-1:20000
Molecular Weight	60kDa

Antigen Information

Gene Name	CLK2
Alternative Names	CLK2; Dual specificity protein kinase CLK2; CDC-like kinase 2
Gene ID	1196.0
SwissProt ID	P49760
Immunogen	The antiserum was produced against synthesized peptide derived from human CLK2. AA range:1-50

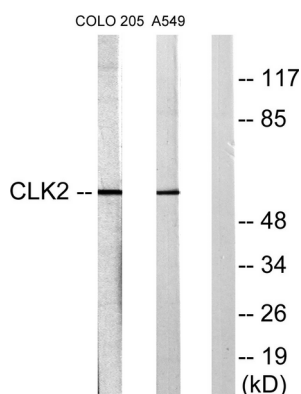
Background

CDC like kinase 2(CLK2) Homo sapiens This gene encodes a dual specificity protein kinase that phosphorylates

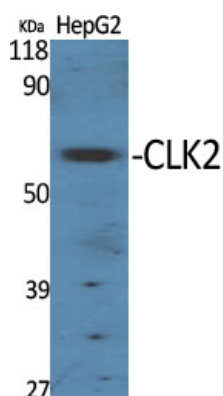
serine/threonine and tyrosine-containing substrates. Activity of this protein regulates serine- and arginine-rich (SR) proteins of the spliceosomal complex, thereby influencing alternative transcript splicing. Chromosomal translocations have been characterized between this locus and the PAFAH1B3 (platelet-activating factor acetylhydrolase 1b, catalytic subunit 3 (29kDa)) gene on chromosome 19, resulting in the production of a fusion protein. Note that this gene is distinct from the TELO2 gene (GeneID:9894), which shares the CLK2 alias, but encodes a protein that is involved in telomere length regulation. There is a pseudogene for this gene on chromosome 7. Alternative splicing results in multiple transcript variants. [provided by RefSeq, Jun 2014],catalytic activity:ATP + a protein = ADP + a phosphoprotein.,function:Phosphorylates serine- and arginine-rich (SR) proteins of the spliceosomal complex may be a constituent of a network of regulatory mechanisms that enable SR proteins to control RNA splicing. Phosphorylates serines, threonines and tyrosines.,PTM:Autophosphorylates on all three types of residues.,similarity:Belongs to the protein kinase superfamily.,similarity:Belongs to the protein kinase superfamily. CMGC Ser/Thr protein kinase family. Lammer subfamily.,similarity:Contains 1 protein kinase domain.,

Research Area

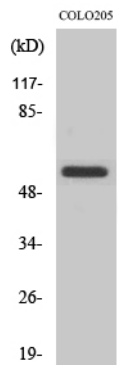
Image Data



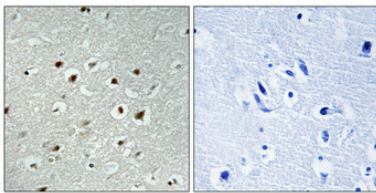
Western blot analysis of lysates from COLO205 and A549 cells, using CLK2 Antibody. The lane on the right is blocked with the synthesized peptide.



Western Blot analysis of various cells using CLK2 Polyclonal Antibody.



Western Blot analysis of A549 cells using CLK2 Polyclonal Antibody.



Immunohistochemical analysis of paraffin-embedded Human brain. Antibody was diluted at 1:100 (4°, overnight) . High-pressure and temperature Tris-EDTA, pH8.0 was used for antigen retrieval. Negative control (right) obtained from antibody was pre-absorbed by immunogen peptide.