
Product Name: CLK1 Rabbit Polyclonal Antibody**Catalog #: APRab09048**

For research use only.

Summary

Description	Rabbit polyclonal Antibody
Host	Rabbit
Application	WB,IHC,ICC/IF,ELISA
Reactivity	Human,Mouse
Conjugation	Unconjugated
Modification	Unmodified
Isotype	IgG
Clonality	Polyclonal
Form	Liquid
Concentration	1mg/ml
Storage	Aliquot and store at -20°C (valid for 12 months). Avoid freeze/thaw cycles.
Shipping	Ice bags
Buffer	Liquid in PBS containing 50% glycerol, 0.5% protective protein and 0.02% New type preservative N.
Purification	Affinity purification

Application

Dilution Ratio	WB 1:500-1:2000,IHC 1:100-1:300,ICC/IF 1:200-1:1000,ELISA 1:10000-1:20000
Molecular Weight	57kDa

Antigen Information

Gene Name	CLK1
Alternative Names	CLK1; CLK; Dual specificity protein kinase CLK1; CDC-like kinase 1
Gene ID	1195.0
SwissProt ID	P49759
Immunogen	The antiserum was produced against synthesized peptide derived from human CLK1. AA range:101-150

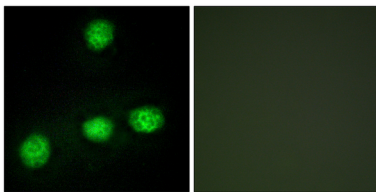
Background

CDC like kinase 1(CLK1) Homo sapiens This gene encodes a member of the CDC2-like (or LAMMER) family of dual specificity

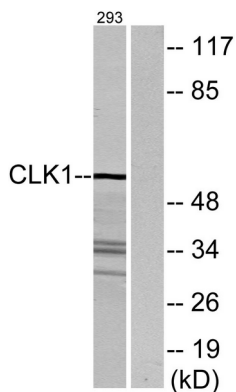
protein kinases. In the nucleus, the encoded protein phosphorylates serine/arginine-rich proteins involved in pre-mRNA processing, releasing them into the nucleoplasm. The choice of splice sites during pre-mRNA processing may be regulated by the concentration of transacting factors, including serine/arginine rich proteins. Therefore, the encoded protein may play an indirect role in governing splice site selection. Multiple transcript variants encoding different isoforms have been found for this gene. [provided by RefSeq, Jun 2009],catalytic activity:ATP + a protein = ADP + a phosphoprotein.,function:Phosphorylates serine- and arginine-rich (SR) proteins of the spliceosomal complex may be a constituent of a network of regulatory mechanisms that enable SR proteins to control RNA splicing. Phosphorylates serines, threonines and tyrosines.,PTM:Autophosphorylates on all three types of residues.,similarity:Belongs to the protein kinase superfamily.,similarity:Belongs to the protein kinase superfamily. CMGC Ser/Thr protein kinase family. Lammer subfamily.,similarity:Contains 1 protein kinase domain.,subunit:Interacts with PPIG.,

Research Area

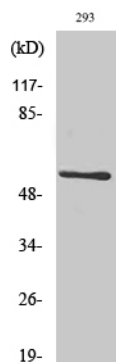
Image Data



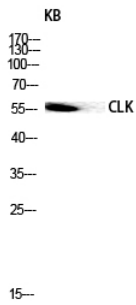
Immunofluorescence analysis of HUVEC cells, using CLK1 Antibody. The picture on the right is blocked with the synthesized peptide.



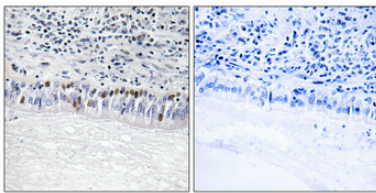
Western blot analysis of lysates from 293 cells, using CLK1 Antibody. The lane on the right is blocked with the synthesized peptide.



Western Blot analysis of various cells using CLK1 Polyclonal Antibody diluted at 1:500.



Western blot analysis of KB lysis using CLK1 antibody. Antibody was diluted at 1:500.



Immunohistochemical analysis of paraffin-embedded Human lung cancer. Antibody was diluted at 1:100 (4°,overnight) . High-pressure and temperature Tris-EDTA,pH8.0 was used for antigen retrieval. Negative contrl (right) obtaned from antibody was pre-absorbed by immunogen peptide.