

Product Name: CLIP4 Rabbit Polyclonal Antibody**Catalog #: APRab09047**

For research use only.

Summary

Description	Rabbit polyclonal Antibody
Host	Rabbit
Application	WB,ELISA
Reactivity	Human,Rat,Mouse
Conjugation	Unconjugated
Modification	Unmodified
Isotype	IgG
Clonality	Polyclonal
Form	Liquid
Concentration	1mg/ml
Storage	Aliquot and store at -20°C (valid for 12 months). Avoid freeze/thaw cycles.
Shipping	Ice bags
Buffer	Liquid in PBS containing 50% glycerol, 0.5% protective protein and 0.02% New type preservative N.
Purification	Affinity purification

Application

Dilution Ratio	WB 1:500-1:2000,ELISA 1:20000-1:40000
Molecular Weight	76kDa

Antigen Information

Gene Name	CLIP4
Alternative Names	CLIP4; RSNL2; CAP-Gly domain-containing linker protein 4; Restin-like protein 2
Gene ID	79745.0
SwissProt ID	Q8N3C7
Immunogen	The antiserum was produced against synthesized peptide derived from human CLIP4. AA range:321-370

Background

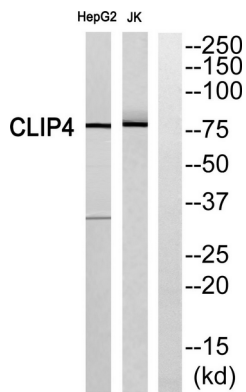
similarity:Contains 3 ANK repeats.,similarity:Contains 3 CAP-Gly domains.,similarity:Contains 3 ANK repeats.,similarity:Contains

3 CAP-Gly domains.,

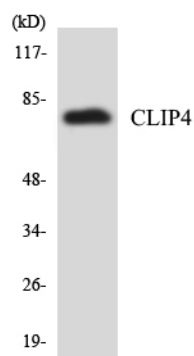
Research Area

Regulation of Microtubule Dynamics

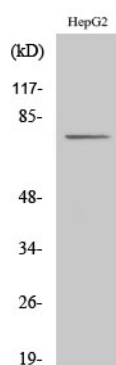
Image Data



Western blot analysis of CLIP4 Antibody. The lane on the right is blocked with the CLIP4 peptide.



Western blot analysis of the lysates from HUVEC cells using CLIP4 antibody.



Western Blot analysis of various cells using CLIP4 Polyclonal Antibody