
Product Name: Cleaved-Lamin A (D230) Rabbit Polyclonal Antibody**Catalog #: APRab09005**

For research use only.

Summary

Description	Rabbit polyclonal Antibody
Host	Rabbit
Application	WB,IHC,ICC/IF,ELISA
Reactivity	Human,Mouse,Rat
Conjugation	Unconjugated
Modification	Unmodified
Isotype	IgG
Clonality	Polyclonal
Form	Liquid
Concentration	1mg/ml
Storage	Aliquot and store at -20°C (valid for 12 months). Avoid freeze/thaw cycles.
Shipping	Ice bags
Buffer	Liquid in PBS containing 50% glycerol, 0.5% protective protein and 0.02% New type preservative N.
Purification	Affinity purification

Application

Dilution Ratio	WB 1:500-1:2000,IHC 1:100-1:300,ICC/IF 1:50-1:200,ELISA 1:5000-1:20000
Molecular Weight	28+75kDa

Antigen Information

Gene Name	LMNA
Alternative Names	LMNA; LMN1; Prelamin-A/C
Gene ID	4000.0
SwissProt ID	P02545
Immunogen	The antiserum was produced against synthesized peptide derived from human Lamin A. AA range:181-230

Background

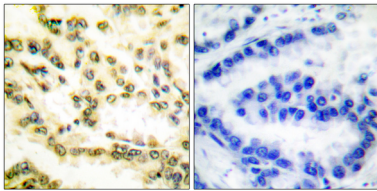
Lamin-A/C Lamins are intermediate filament proteins that assemble into a filamentous meshwork, and which constitute the

major components of the nuclear lamina, a fibrous layer on the nucleoplasmic side of the inner nuclear membrane (PubMed:10080180, PubMed:10580070, PubMed:10587585, PubMed:10814726, PubMed:11799477, PubMed:12075506, PubMed:12927431, PubMed:15317753, PubMed:18551513, PubMed:18611980, PubMed:2188730, PubMed:22431096, PubMed:2344612, PubMed:23666920, PubMed:24741066, PubMed:31434876, PubMed:31548606, PubMed:37788673, PubMed:37832547).

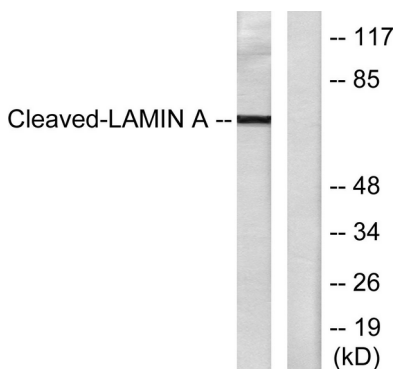
Research Area

Hypertrophic cardiomyopathy (HCM); Arrhythmogenic right ventricular cardiomyopathy (ARVC); Dilated cardiomyopathy;

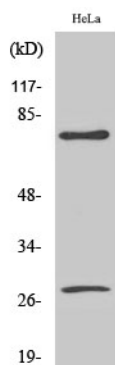
Image Data



Immunohistochemistry analysis of paraffin-embedded human lung carcinoma tissue, using Lamin A (Cleaved-Asp230) Antibody. The picture on the right is blocked with the synthesized peptide.



Western blot analysis of lysates from HeLa cells, treated with Etoposide 25uM 60', using Lamin A (Cleaved-Asp230) Antibody. The lane on the right is blocked with the synthesized peptide.



Western Blot analysis of various cells using Cleaved-Lamin A (D230) Polyclonal Antibody