
Product Name: Cleaved-ITI-H4 70k (R661) Rabbit Polyclonal Antibody**Catalog #: APRab09001**

For research use only.

Summary

| | |
|----------------------|---|
| Description | Rabbit polyclonal Antibody |
| Host | Rabbit |
| Application | IHC,ICC/IF,ELISA |
| Reactivity | Human,Rat,Mouse |
| Conjugation | Unconjugated |
| Modification | Unmodified |
| Isotype | IgG |
| Clonality | Polyclonal |
| Form | Liquid |
| Concentration | 1mg/ml |
| Storage | Aliquot and store at -20°C (valid for 12 months). Avoid freeze/thaw cycles. |
| Shipping | Ice bags |
| Buffer | Liquid in PBS containing 50% glycerol, 0.5% protective protein and 0.02% New type preservative N. |
| Purification | Affinity purification |

Application

Dilution Ratio IHC 1:100-1:300,ICC/IF 1:50-1:200,ELISA 1:5000-1:20000

Molecular Weight

Antigen Information

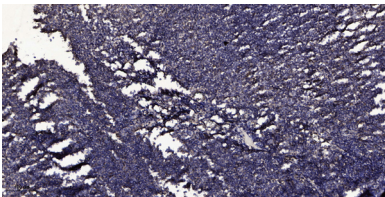
| | |
|--------------------------|---|
| Gene Name | ITIH4 ITIH4; IHRP; ITIHL1; PK120; Inter-alpha-trypsin inhibitor heavy chain H4; ITI heavy chain H4; |
| Alternative Names | ITI-HC4; Inter-alpha-inhibitor heavy chain 4; Inter-alpha-trypsin inhibitor family heavy chain-related protein; IHRP; Plasma kallikrein sensitive |
| Gene ID | 3700.0 |
| SwissProt ID | Q14624 |
| Immunogen | The antiserum was produced against synthesized peptide derived from human ITIH4. AA range:612-661 |

Background

The protein encoded by this gene is secreted into the blood, where it is cleaved by plasma kallikrein into two smaller forms. Expression of this gene has been detected only in liver, and it seems to be upregulated during surgical trauma. This gene is part of a cluster of similar genes on chromosome 3. Two transcript variants encoding different isoforms have been found for this gene. [provided by RefSeq, Oct 2009],function:May be involved in acute phase reactions.,induction:Levels increase significantly in the sera of patients after different surgical trauma.,PTM:Appears to be both N- and O-glycosylated.,PTM:Cleaved by plasma kallikrein to yield 100 kDa and 35 kDa fragments, and the resulting 100 kDa fragment is further converted to a 70 kDa fragment.,PTM:The O-linked polysaccharides on Ser-696, Thr-701 and Ser-702 are probably the mucin type linked to GalNAc.,similarity:Belongs to the ITIH family.,similarity:Contains 1 VWFA domain.,tissue specificity:Liver specific.,

Research Area

Image Data



Immunohistochemical analysis of paraffin-embedded human tonsil. 1, Antibody was diluted at 1:200 (4° overnight) . 2, Tris-EDTA,pH9.0 was used for antigen retrieval. 3,Secondary antibody was diluted at 1:200 (room temperature, 30min) .