

**Product Name: Cleaved-ITI-H1 (D672) Rabbit Polyclonal Antibody****Catalog #: APRab08999**

For research use only.

**Summary**

|                      |   |
|----------------------|---|
| <b>Description</b>   | Rabbit polyclonal Antibody  |
| <b>Host</b>          | Rabbit  |
| <b>Application</b>   | WB,ELISA  |
| <b>Reactivity</b>    | Human,Mouse   |
| <b>Conjugation</b>   | Unconjugated  |
| <b>Modification</b>  | Unmodified  |
| <b>Isotype</b>       | IgG   |
| <b>Clonality</b>     | Polyclonal  |
| <b>Form</b>          | Liquid  |
| <b>Concentration</b> | 1mg/ml  |
| <b>Storage</b>       | Aliquot and store at -20°C (valid for 12 months). Avoid freeze/thaw cycles.                       |
| <b>Shipping</b>      | Ice bags  |
| <b>Buffer</b>        | Liquid in PBS containing 50% glycerol, 0.5% protective protein and 0.02% New type preservative N. |
| <b>Purification</b>  | Affinity purification   |

**Application**

|                         |                                       |
|-------------------------|---------------------------------------|
| <b>Dilution Ratio</b>   | WB 1:500-1:2000,ELISA 1:10000-1:20000 |
| <b>Molecular Weight</b> | 71kDa                                 |

**Antigen Information**

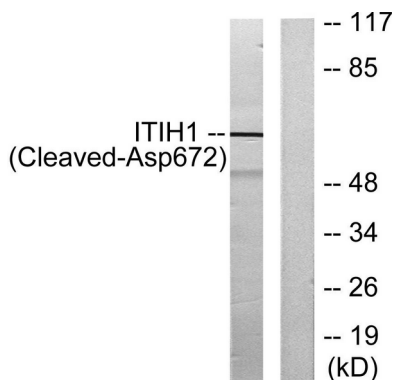
|                          |   |
|--------------------------|---|
| <b>Gene Name</b>         | ITIH1<br>ITIH1; IGHEP1; Inter-alpha-trypsin inhibitor heavy chain H1; ITI heavy chain H1; ITI-HC1;  |
| <b>Alternative Names</b> | Inter-alpha-inhibitor heavy chain 1; Inter-alpha-trypsin inhibitor complex component III; Serum-derived hyaluronan-associated protein; SHAP |
| <b>Gene ID</b>           | 3697.0  |
| <b>SwissProt ID</b>      | P19827  |
| <b>Immunogen</b>         | The antiserum was produced against synthesized peptide derived from human ITIH1. AA range:623-672   |

## Background

This gene encodes a member of the inter-alpha-trypsin inhibitor family of proteins. Alternative splicing results in multiple transcript variants, at least one of which encodes a preproprotein that is proteolytically processed to generate the heavy chain of the inter-alpha-trypsin inhibitor complex, which is secreted by hepatocytes into the blood. The heavy chain also interacts with hyaluronan, and this interaction may play a role in ovulation and fertilization, and has been implicated in multiple inflammatory diseases. This gene is present in a gene cluster on chromosome 3. [provided by RefSeq, Nov 2015],function:Contains a potential peptide which could stimulate a broad spectrum of phagocytotic cells.,function:May act as a carrier of hyaluronan in serum or as a binding protein between hyaluronan and other matrix protein, including those on cell surfaces in tissues to regulate the localization, synthesis and degradation of hyaluronan which are essential to cells undergoing biological processes.,mass spectrometry: PubMed:9677337,polymorphism:There are 3 common alleles; ITIH1\*1 with Glu-585/Gln-595, ITIH1\*2 with Val-585/Arg-595 and ITIH1\*3 with Glu-585/Arg-595.,PTM:Heavy chains are linked to bikunin via chondroitin 4-sulfate esterified to the alpha-carboxyl of the C-terminal aspartate after propeptide cleavage.,PTM:The S-linked glycan is composed of two units of either Glc or Gal.,similarity:Belongs to the ITIH family.,similarity:Contains 1 VWFA domain.,subunit:I-alpha-I plasma protease inhibitors are assembled from one or two heavy chains (H1, H2 or H3) and one light chain, bikunin. Inter-alpha-inhibitor (I-alpha-I) is composed of H1, H2 and bikunin, inter-alpha-like inhibitor (I-alpha-LI) of H2 and bikunin, and pre-alpha-inhibitor (P-alpha-I) of H3 and bikunin.,

## Research Area

## Image Data



Western blot analysis of lysates from Jurkat cells, treated with etoposide 25uM 24h, using ITIH1 (Cleaved-Asp672) Antibody. The lane on the right is blocked with the synthesized peptide.