
Product Name: Cleaved-GGT4 HC (T472) Rabbit Polyclonal Antibody**Catalog #: APRab08993**

For research use only.

Summary

Description	Rabbit polyclonal Antibody
Host	Rabbit
Application	WB,ELISA
Reactivity	Human,Mouse,Rat
Conjugation	Unconjugated
Modification	Unmodified
Isotype	IgG
Clonality	Polyclonal
Form	Liquid
Concentration	1mg/ml
Storage	Aliquot and store at -20°C (valid for 12 months). Avoid freeze/thaw cycles.
Shipping	Ice bags
Buffer	Liquid in PBS containing 50% glycerol, 0.5% protective protein and 0.02% New type preservative N.
Purification	Affinity purification

Application

Dilution Ratio	WB 1:500-1:2000,ELISA 1:5000-1:20000
Molecular Weight	50kDa

Antigen Information

Gene Name	GGT7 GGT7; GGTL3; GGTL5; Gamma-glutamyltransferase 7; GGT 7; Gamma-glutamyltransferase-like 3; Gamma-glutamyltransferase-like 5; Gamma-glutamyltranspeptidase 7; Glutathione hydrolase 7
Alternative Names	
Gene ID	2686.0
SwissProt ID	Q9UJ14
Immunogen	The antiserum was produced against synthesized peptide derived from human Gamma-glutamyltransferase 4. AA range:423-472

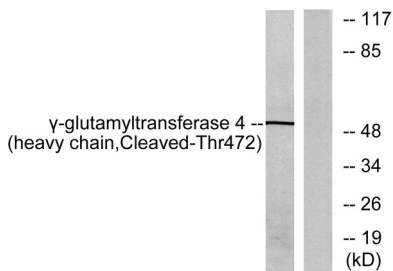
Background

This gene is a member of a gene family that encodes enzymes involved in both the metabolism of glutathione and in the transpeptidation of amino acids. Changes in the activity of gamma-glutamyltransferase may signal preneoplastic or toxic conditions in the liver or kidney. The protein encoded by this gene consists of a heavy and a light chain, and it can interact with CT120, a plasma membrane-associated protein that is possibly involved in lung carcinogenesis. [provided by RefSeq, Jul 2008],catalytic activity:(5-L-glutamyl)-peptide + an amino acid = peptide + 5-L-glutamyl amino acid.,function:Cleaves glutathione conjugates.,pathway:Sulfur metabolism; glutathione metabolism.,similarity:Belongs to the gamma-glutamyltransferase family.,subunit:Heterodimer composed of the light and heavy chains. The active site is located in the light chain (By similarity). Isoform 3 interacts with FAM57A.,tissue specificity:Widely expressed, but at low level, except in the airway epithelial cells. Detected in brain, heart, kidney, liver, lung, spleen, testis and trachea.,

Research Area

Taurine and hypotaurine metabolism;Selenoamino acid metabolism;Cyanoamino acid metabolism;Glutathione metabolism;Arachidonic acid metabolism;

Image Data



Western blot analysis of lysates from Jurkat cells, treated with etoposide 25uM 24h, using Gamma-glutamyltransferase 4 (heavy chain,Cleaved-Thr472) Antibody. The lane on the right is blocked with the synthesized peptide.