

Product Name: Cleaved-Cathepsin Z (L62) Rabbit Polyclonal Antibody**Catalog #: APRab08979**

For research use only.

Summary

Description	Rabbit polyclonal Antibody
Host	Rabbit
Application	WB,ELISA
Reactivity	Human,Monkey
Conjugation	Unconjugated
Modification	Unmodified
Isotype	IgG
Clonality	Polyclonal
Form	Liquid
Concentration	1mg/ml
Storage	Aliquot and store at -20°C (valid for 12 months). Avoid freeze/thaw cycles.
Shipping	Ice bags
Buffer	Liquid in PBS containing 50% glycerol, 0.5% protective protein and 0.02% New type preservative N.
Purification	Affinity purification

Application

Dilution Ratio	WB 1:500-1:2000,ELISA 1:5000-1:10000
Molecular Weight	27kDa

Antigen Information

Gene Name	CTSZ
Alternative Names	CTSZ; Cathepsin Z; Cathepsin P; Cathepsin X
Gene ID	1522.0
SwissProt ID	Q9UBR2
Immunogen	The antiserum was produced against synthesized peptide derived from human CATZ. AA range:43-92

Background

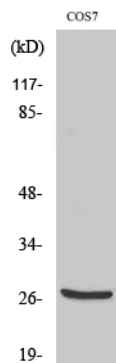
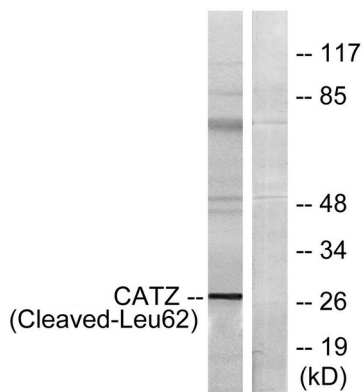
The protein encoded by this gene is a lysosomal cysteine proteinase and member of the peptidase C1 family. It exhibits both

carboxy-monopeptidase and carboxy-dipeptidase activities. The encoded protein has also been known as cathepsin X and cathepsin P. This gene is expressed ubiquitously in cancer cell lines and primary tumors and, like other members of this family, may be involved in tumorigenesis. [provided by RefSeq, Oct 2008],catalytic activity:Release of C-terminal amino acid residues with broad specificity, but lacks action on C-terminal proline. Shows weak endopeptidase activity.,function:Exhibits carboxy-monopeptidase as well as carboxy-dipeptidase activity.,similarity:Belongs to the peptidase C1 family.,tissue specificity:Widely expressed.,

Research Area

Lysosome;

Image Data



Western Blot analysis of various cells using Cleaved-Cathepsin Z (L62) Polyclonal Antibody