
Product Name: Cleaved-Cathepsin L2 (L114) Rabbit Polyclonal Antibody**Catalog #: APRab08978**

For research use only.

Summary

Description	Rabbit polyclonal Antibody
Host	Rabbit
Application	WB,ELISA
Reactivity	Human,Monkey
Conjugation	Unconjugated
Modification	Unmodified
Isotype	IgG
Clonality	Polyclonal
Form	Liquid
Concentration	1mg/ml
Storage	Aliquot and store at -20°C (valid for 12 months). Avoid freeze/thaw cycles.
Shipping	Ice bags
Buffer	Liquid in PBS containing 50% glycerol, 0.5% protective protein and 0.02% New type preservative N.
Purification	Affinity purification

Application

Dilution Ratio	WB 1:500-1:2000,ELISA 1:10000-1:20000
Molecular Weight	37kDa

Antigen Information

Gene Name	CTSL2
Alternative Names	CTSL2; CATL2; CTSU; CTSV; Cathepsin L2; Cathepsin U; Cathepsin V
Gene ID	1515.0
SwissProt ID	O60911
Immunogen	The antiserum was produced against synthesized peptide derived from human CATL2. AA range:95-144

Background

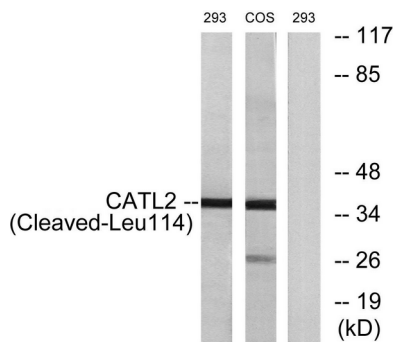
The protein encoded by this gene, a member of the peptidase C1 family, is a lysosomal cysteine proteinase that may play an

important role in corneal physiology. This gene is expressed in colorectal and breast carcinomas but not in normal colon, mammary gland, or peritumoral tissues, suggesting a possible role for this gene in tumor processes. Alternatively spliced variants, encoding the same protein, have been identified. [provided by RefSeq, Jan 2011],catalytic activity:The recombinant enzyme hydrolyzes proteins (serum albumin, collagen) and synthetic substrates (Z-Phe-Arg-NHMec > Z-Leu-Arg-NHMec > Z-Val-Arg-NHMec),function:Cysteine protease. May have an important role in corneal physiology.,similarity:Belongs to the peptidase C1 family.,tissue specificity:Predominantly expressed in the thymus and testis. Also expressed in corneal epithelium, and to a lesser extent in conjunctival epithelium and skin.,

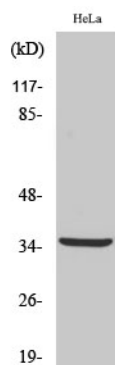
Research Area

Lysosome;

Image Data



Western blot analysis of lysates from 293 and COS cells, treated with etoposide 25uM 1h, using CATL2 (Cleaved-Leu114) Antibody. The lane on the right is blocked with the synthesized peptide.



Western Blot analysis of various cells using Cleaved-Cathepsin L2 (L114) Polyclonal Antibody