
Product Name: Cleaved-Cathepsin L1 HC (T288) Rabbit Polyclonal Antibody**Catalog #: APRab08977**

For research use only.

Summary

Description	Rabbit polyclonal Antibody
Host	Rabbit
Application	WB,ELISA
Reactivity	Human,Rat,Mouse
Conjugation	Unconjugated
Modification	Unmodified
Isotype	IgG
Clonality	Polyclonal
Form	Liquid
Concentration	1mg/ml
Storage	Aliquot and store at -20°C (valid for 12 months). Avoid freeze/thaw cycles.
Shipping	Ice bags
Buffer	Liquid in PBS containing 50% glycerol, 0.5% protective protein and 0.02% New type preservative N.
Purification	Affinity purification

Application

Dilution Ratio	WB 1:500-1:2000,ELISA 1:5000-1:20000
Molecular Weight	30kDa

Antigen Information

Gene Name	CTSL1
Alternative Names	CTSL1; CTSL; Cathepsin L1; Major excreted protein; MEP
Gene ID	1514.0
SwissProt ID	P07711
Immunogen	The antiserum was produced against synthesized peptide derived from human CATL1. AA range:239-288

Background

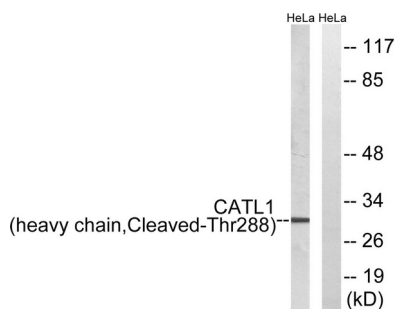
The protein encoded by this gene is a lysosomal cysteine proteinase that plays a major role in intracellular protein catabolism.

Its substrates include collagen and elastin, as well as alpha-1 protease inhibitor, a major controlling element of neutrophil elastase activity. The encoded protein has been implicated in several pathologic processes, including myofibril necrosis in myopathies and in myocardial ischemia, and in the renal tubular response to proteinuria. This protein, which is a member of the peptidase C1 family, is a dimer composed of disulfide-linked heavy and light chains, both produced from a single protein precursor. Multiple alternatively spliced transcript variants have been found for this gene. [provided by RefSeq, Apr 2012],catalytic activity:Specificity close to that of papain. As compared to cathepsin B, cathepsin L exhibits higher activity toward protein substrates, but has little activity on Z-Arg-Arg-NHMec, and no peptidyl-dipeptidase activity.,function:Important for the overall degradation of proteins in lysosomes.,similarity:Belongs to the peptidase C1 family.,subunit:Dimer of a heavy and a light chain linked by disulfide bonds.,

Research Area

Lysosome;Antigen processing and presentation;

Image Data



Western blot analysis of lysates from HeLa cells, treated with etoposide 25uM 1h, using CATL1 (heavy chain,Cleaved-Thr288) Antibody. The lane on the right is blocked with the synthesized peptide.



Western Blot analysis of various cells using Cleaved-Cathepsin L1 HC (T288) Polyclonal Antibody