

---

**Product Name: Cleaved-Cathepsin G (I21) Rabbit Polyclonal Antibody****Catalog #: APRab08976**

For research use only.

**Summary**

<b>Description</b>	Rabbit polyclonal Antibody
<b>Host</b>	Rabbit
<b>Application</b>	WB,ELISA
<b>Reactivity</b>	Human,Mouse,Rat
<b>Conjugation</b>	Unconjugated
<b>Modification</b>	Unmodified
<b>Isotype</b>	IgG
<b>Clonality</b>	Polyclonal
<b>Form</b>	Liquid
<b>Concentration</b>	1mg/ml
<b>Storage</b>	Aliquot and store at -20°C (valid for 12 months). Avoid freeze/thaw cycles.
<b>Shipping</b>	Ice bags
<b>Buffer</b>	Liquid in PBS containing 50% glycerol, 0.5% protective protein and 0.02% New type preservative N.
<b>Purification</b>	Affinity purification

**Application**

<b>Dilution Ratio</b>	WB 1:500-1:2000,ELISA 1:10000-1:20000
<b>Molecular Weight</b>	28+26kDa

**Antigen Information**

<b>Gene Name</b>	CTSG
<b>Alternative Names</b>	CTSG; Cathepsin G; CG
<b>Gene ID</b>	1511.0
<b>SwissProt ID</b>	P08311
<b>Immunogen</b>	The antiserum was produced against synthesized peptide derived from human CATG. AA range:2-51

**Background**

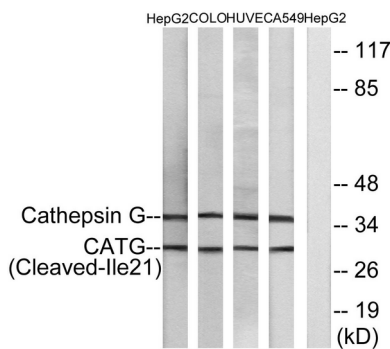
The protein encoded by this gene, a member of the peptidase S1 protein family, is found in azurophilic granules of neutrophilic

polymorphonuclear leukocytes. The encoded protease has a specificity similar to that of chymotrypsin C, and may participate in the killing and digestion of engulfed pathogens, and in connective tissue remodeling at sites of inflammation. In addition, the encoded protein is antimicrobial, with bacteriocidal activity against *S. aureus* and *N. gonorrhoeae*. Transcript variants utilizing alternative polyadenylation signals exist for this gene. [provided by RefSeq, Sep 2014], catalytic activity: Specificity similar to chymotrypsin C., enzyme regulation: Inhibited by soybean trypsin inhibitor, benzamidine, the synthetic peptide R13K, Z-Gly-Leu-Phe-CH<sub>2</sub>Cl and phenylmethylsulfonyl fluoride. Inhibited by LPS from *P.aeruginosa* but not by LPS from *S.minnesota*., function: Serine protease with trypsin- and chymotrypsin-like specificity. Has antibacterial activity against the Gram-negative bacterium *P.aeruginosa*, antibacterial activity is inhibited by LPS from *P.aeruginosa*, Z-Gly-Leu-Phe-CH<sub>2</sub>Cl and phenylmethylsulfonyl fluoride., similarity: Belongs to the peptidase S1 family., similarity: Contains 1 peptidase S1 domain.,

## Research Area

Neuroactive ligand-receptor interaction; Lysosome; Renin-angiotensin system; Systemic lupus erythematosus;

## Image Data



Western blot analysis of lysates from HepG2, COLO, HUVEC, and A549 cells, using CATG (Cleaved-Ile21) Antibody. The lane on the right is blocked with the synthesized peptide.



Western Blot analysis of various cells using Cleaved-Cathepsin G (I21) Polyclonal Antibody