

Product Name: CLC-KA Rabbit Polyclonal Antibody
Catalog #: APRab08931



Summary

Production Name	CLC-KA Rabbit Polyclonal Antibody
Description	Rabbit Polyclonal Antibody
Host	Rabbit
Application	WB,ELISA
Reactivity	Human,Rat,Mouse

Performance

Conjugation	Unconjugated
Modification	Unmodified
Isotype	IgG
Clonality	Polyclonal
Form	Liquid
Storage	Store at 4°C short term. Aliquot and store at -20°C long term. Avoid freeze/thaw cycles.
Buffer	Liquid in PBS containing 50% glycerol, 0.5% protective protein and 0.02% New type preservative N.
Purification	Affinity purification

Immunogen

Gene Name	CLCNKA
Alternative Names	CLCNKA; Chloride channel protein CLC-Ka; Chloride channel Ka; CLC-K1
Gene ID	1187.0
SwissProt ID	P51800.The antiserum was produced against synthesized peptide derived from human CLCNKA. AA range:581-630

Application

Dilution Ratio	WB 1:500-1:2000, ELISA 1:40000.Not yet tested in other applications.
Molecular Weight	75kDa

Product Name: CLC-KA Rabbit Polyclonal Antibody
Catalog #: APRab08931

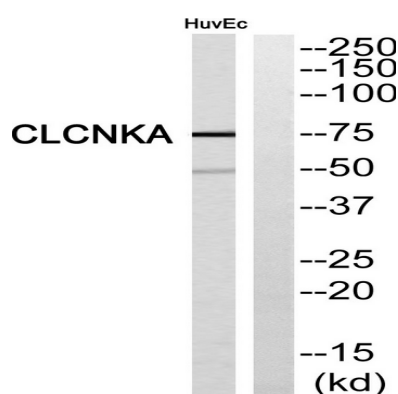


Background

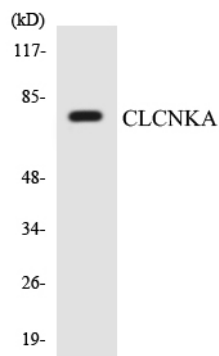
This gene is a member of the CLC family of voltage-gated chloride channels. The encoded protein is predicted to have 12 transmembrane domains, and requires a beta subunit called barttin to form a functional channel. It is thought to function in salt reabsorption in the kidney and potassium recycling in the inner ear. The gene is highly similar to CLCNKB, which is located 10 kb downstream from this gene. Multiple transcript variants encoding different isoforms have been found for this gene. [provided by RefSeq, Jul 2008],function:Voltage-gated chloride channel. Chloride channels have several functions including the regulation of cell volume; membrane potential stabilization, signal transduction and transepithelial transport. May be important in urinary concentrating mechanisms.,similarity:Belongs to the chloride channel (TC 2.A.49) family.,similarity:Contains 2 CBS domains.,subunit:Interacts with BSND. Forms heteromers with BSND in the thin ascending limb of Henle.,tissue specificity:Expressed predominantly in the kidney. All nephron segments expressing BSND also express CLCNK proreins.,

Research Area

Image Data

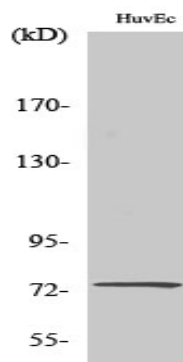


Western blot analysis of CLCNKA Antibody. The lane on the right is blocked with the CLCNKA peptide.



Western blot analysis of the lysates from HepG2 cells using CLCNKA antibody.

Product Name: CLC-KA Rabbit Polyclonal Antibody
Catalog #: APRab08931



Western Blot analysis of various cells using CLC-KA Polyclonal Antibody

Note

For research use only.