

Product Name: Claudin-2 Rabbit Polyclonal Antibody**Catalog #: APRab08906**

For research use only.

Summary

Description	Rabbit polyclonal Antibody
Host	Rabbit
Application	WB,IHC,ICC/IF,ELISA
Reactivity	Human,Mouse
Conjugation	Unconjugated
Modification	Unmodified
Isotype	IgG
Clonality	Polyclonal
Form	Liquid
Concentration	1mg/ml
Storage	Aliquot and store at -20°C (valid for 12 months). Avoid freeze/thaw cycles.
Shipping	Ice bags
Buffer	Liquid in PBS containing 50% glycerol, 0.5% protective protein and 0.02% New type preservative N.
Purification	Affinity purification

Application

Dilution Ratio	WB 1:500-1:2000,IHC 1:100-1:300,ICC/IF 1:50-1:200,ELISA 1:5000-1:10000
Molecular Weight	25kDa

Antigen Information

Gene Name	CLDN2
Alternative Names	CLDN2; PSEC0059; SP82; Claudin-2; SP82
Gene ID	9075.0
SwissProt ID	P57739
Immunogen	The antiserum was produced against synthesized peptide derived from human Claudin 2. AA range:181-230

Background

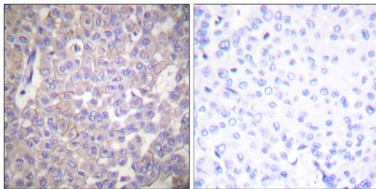
This gene product belongs to the claudin protein family whose members have been identified as major integral membrane

proteins localized exclusively at tight junctions. Claudins are expressed in an organ-specific manner and regulate tissue-specific physiologic properties of tight junctions. This protein is expressed in the intestine. Alternatively spliced transcript variants with different 5' untranslated region have been found for this gene.[provided by RefSeq, Jan 2010],function:Plays a major role in tight junction-specific obliteration of the intercellular space, through calcium-independent cell-adhesion activity.,similarity:Belongs to the claudin family.,subunit:Can form homo- and heteropolymers with other CLDN. Homopolymers interact with CLDN3, but not CLDN1, homopolymers. Directly interacts with TJP1/ZO-1, TJP2/ZO-2 and TJP3/ZO-3.,

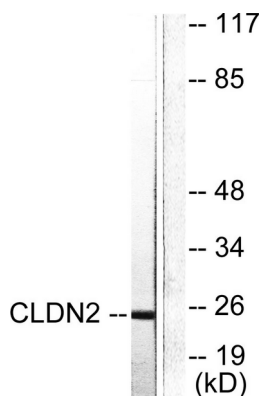
Research Area

Cell adhesion molecules (CAMs);Tight junction;Leukocyte transendothelial migration;

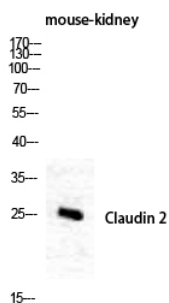
Image Data



Immunohistochemistry analysis of paraffin-embedded human breast carcinoma tissue, using Claudin 2 Antibody. The picture on the right is blocked with the synthesized peptide.



Western blot analysis of lysates from NIH/3T3 cells, using Claudin 2 Antibody. The lane on the right is blocked with the synthesized peptide.



Western Blot analysis of mouse-kidney cells using Claudin-2 Polyclonal Antibody diluted at 1: 1000