
Product Name: Claudin 11 Rabbit Polyclonal Antibody**Catalog #: APRab08892**

For research use only.

Summary

Description	Rabbit polyclonal Antibody
Host	Rabbit
Application	WB,ELISA
Reactivity	Human,Mouse,Rat
Conjugation	Unconjugated
Modification	Unmodified
Isotype	IgG
Clonality	Polyclonal
Form	Liquid
Concentration	1mg/ml
Storage	Aliquot and store at -20°C (valid for 12 months). Avoid freeze/thaw cycles.
Shipping	Ice bags
Buffer	Liquid in PBS containing 50% glycerol, 0.5% protective protein and 0.02% New type preservative N.
Purification	Affinity purification

Application

Dilution Ratio	WB 1:500-1:2000,ELISA 1:10000-1:20000
Molecular Weight	20kDa

Antigen Information

Gene Name	CLDN11 OSP OTM
Alternative Names	Claudin-11 (Oligodendrocyte-specific protein)
Gene ID	5010.0
SwissProt ID	O75508
Immunogen	Synthesized peptide derived from human Claudin 11

Background

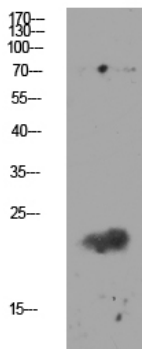
This gene encodes a member of the claudin family. Claudins are integral membrane proteins and components of tight junction strands. Tight junction strands serve as a physical barrier to prevent solutes and water from passing freely through the

paracellular space between epithelial or endothelial cell sheets, and also play critical roles in maintaining cell polarity and signal transductions. The protein encoded by this gene is a major component of central nervous system (CNS) myelin and plays an important role in regulating proliferation and migration of oligodendrocytes. Mouse studies showed that the gene deficiency results in deafness and loss of the Sertoli cell epithelial phenotype in the testis. This protein is a tight junction protein at the human blood-testis barrier (BTB), and the BTB disruption is related to a dysfunction of this gene. Alternatively spliced transcript variants encoding different isoforms: Plays a major role in tight junction-specific obliteration of the intercellular space, through calcium-independent cell-adhesion activity., similarity: Belongs to the claudin family., subunit: Interacts with tetraspanin-3/TSPAN3.,

Research Area

Cell adhesion molecules (CAMs); Tight junction; Leukocyte transendothelial migration;

Image Data



Western blot analysis of mouse-kidney lysate, antibody was diluted at 1000. Secondary antibody was diluted at 1:20000