

**Product Name: CLASR Rabbit Polyclonal Antibody****Catalog #: APRab08888**

For research use only.

**Summary**

<b>Description</b>	Rabbit polyclonal Antibody
<b>Host</b>	Rabbit
<b>Application</b>	WB,ELISA
<b>Reactivity</b>	Human,Rat,Mouse
<b>Conjugation</b>	Unconjugated
<b>Modification</b>	Unmodified
<b>Isotype</b>	IgG
<b>Clonality</b>	Polyclonal
<b>Form</b>	Liquid
<b>Concentration</b>	1mg/ml
<b>Storage</b>	Aliquot and store at -20°C (valid for 12 months). Avoid freeze/thaw cycles.
<b>Shipping</b>	Ice bags
<b>Buffer</b>	Liquid in PBS containing 50% glycerol, and 0.02% New type preservative N.
<b>Purification</b>	Affinity purification

**Application**

<b>Dilution Ratio</b>	WB 1:500-1:2000,ELISA 1:5000-1:20000
<b>Molecular Weight</b>	74kDa

**Antigen Information**

<b>Gene Name</b>	CLASRP SFRS16 SWAP2 UNQ2428/PRO4988
<b>Alternative Names</b>	
<b>Gene ID</b>	11129.0
<b>SwissProt ID</b>	Q8N2M8
<b>Immunogen</b>	Synthesized peptide derived from part region of human protein

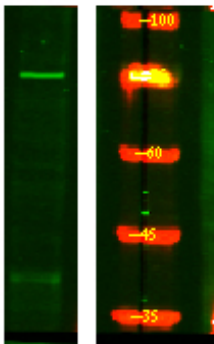
**Background**

caution:It is uncertain whether Met-1 or Met-16 is the initiator.,function:Probably functions as an alternative splicing regulator. May regulate the mRNA splicing of genes such as CLK1. May act by regulating members of the CLK kinase family.,PTM:Phosphorylated in vitro by CLK4.,similarity:Belongs to the splicing factor SR family.,subunit:Probably interacts with

CLK4.,caution:It is uncertain whether Met-1 or Met-16 is the initiator.,function:Probably functions as an alternative splicing regulator. May regulate the mRNA splicing of genes such as CLK1. May act by regulating members of the CLK kinase family.,PTM:Phosphorylated in vitro by CLK4.,similarity:Belongs to the splicing factor SR family.,subunit:Probably interacts with CLK4.,

## Research Area

## Image Data



Western Blot analysis of HEK293 lysis, using primary antibody at 1:1000 dilution. Secondary antibody was diluted at 1:10000