
Product Name: CKR-4 Rabbit Polyclonal Antibody**Catalog #: APRab08869**

For research use only.

Summary

Description	Rabbit polyclonal Antibody
Host	Rabbit
Application	WB,IHC,ICC/IF,ELISA
Reactivity	Human,Mouse,Rat
Conjugation	Unconjugated
Modification	Unmodified
Isotype	IgG
Clonality	Polyclonal
Form	Liquid
Concentration	1mg/ml
Storage	Aliquot and store at -20°C (valid for 12 months). Avoid freeze/thaw cycles.
Shipping	Ice bags
Buffer	Liquid in PBS containing 50% glycerol, 0.5% protective protein and 0.02% New type preservative N.
Purification	Affinity purification

Application

Dilution Ratio	WB 1:500-1:2000,IHC 1:100-1:300,ICC/IF 1:50-1:200,ELISA 1:10000-1:20000
Molecular Weight	41kDa

Antigen Information

Gene Name	CCR4
Alternative Names	CCR4; CMKBR4; C-C chemokine receptor type 4; C-C CKR-4; CC-CKR-4; CCR-4; CCR4; K5-5; CD194
Gene ID	1233.0
SwissProt ID	P51679
Immunogen	The antiserum was produced against synthesized peptide derived from the N-terminal region of human CCR4. AA range:1-50

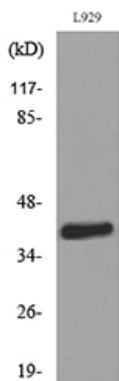
Background

The protein encoded by this gene belongs to the G-protein-coupled receptor family . It is a receptor for the CC chemokine - MIP-1, RANTES, TARC and MCP-1. Chemokines are a group of small polypeptide, structurally related molecules that regulate cell trafficking of various types of leukocytes. The chemokines also play fundamental roles in the development, homeostasis, and function of the immune system, and they have effects on cells of the central nervous system as well as on endothelial cells involved in angiogenesis or angiostasis. [provided by RefSeq, Jul 2008],function:High affinity receptor for the C-C type chemokines CCL17/TARC and CCL22/MDC. The activity of this receptor is mediated by G(i) proteins which activate a phosphatidylinositol-calcium second messenger system. Can function as a chemoattractant homing receptor on circulating memory lymphocytes and as a coreceptor for some primary HIV-2 isolates. In the CNS, could mediate hippocampal-neuron survival.,online information:CC chemokine receptors entry,PTM:In natural killer cells, CCL22 binding induces phosphorylation on yet undefined Ser/Thr residues, most probably by beta-adrenergic receptor kinases 1 and 2.,similarity:Belongs to the G-protein coupled receptor 1 family.,tissue specificity:Predominantly expressed in the thymus, in peripheral blood leukocytes, including T-cells, mostly CD4+ cells, and basophils, and in platelets; at lower levels, in the spleen and in monocytes. Detected also in macrophages, IL-2-activated natural killer cells and skin-homing memory T-cells, mostly the ones expressing the cutaneous lymphocyte antigen (CLA). Expressed in brain microvascular and coronary artery endothelial cells.,

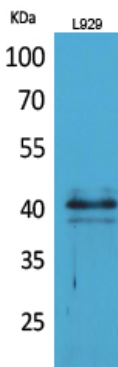
Research Area

Cytokine-cytokine receptor interaction;Chemokine;

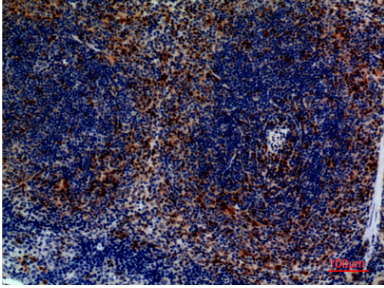
Image Data



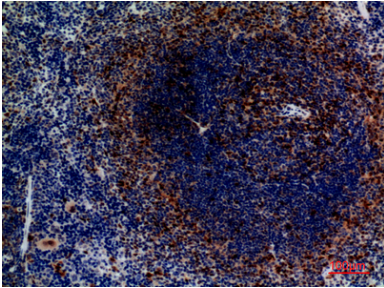
Western blot analysis of lysate from L929 cells, using CCR4 Antibody.



Western Blot analysis of L929 cells using CKR-4 Polyclonal Antibody.. Secondary antibody was diluted at 1:20000



Immunohistochemical analysis of paraffin-embedded mouse-spleen, antibody was diluted at 1:100



Immunohistochemical analysis of paraffin-embedded mouse-spleen, antibody was diluted at 1:100