

Product Name: CKR-2 Rabbit Polyclonal Antibody**Catalog #: APRab08867**

For research use only.

Summary

Description	Rabbit polyclonal Antibody
Host	Rabbit
Application	WB,ICC/IF,ELISA
Reactivity	Mouse,Rat
Conjugation	Unconjugated
Modification	Unmodified
Isotype	IgG
Clonality	Polyclonal
Form	Liquid
Concentration	1mg/ml
Storage	Aliquot and store at -20°C (valid for 12 months). Avoid freeze/thaw cycles.
Shipping	Ice bags
Buffer	Liquid in PBS containing 50% glycerol, 0.5% protective protein and 0.02% New type preservative N.
Purification	Affinity purification

Application

Dilution Ratio	WB 1:500-1:2000,ICC/IF 1:200-1:1000,ELISA 1:5000-1:10000
Molecular Weight	46kDa

Antigen Information

Gene Name	CCR2
Alternative Names	CCR2; CMKBR2; C-C chemokine receptor type 2; C-C CKR-2; CC-CKR-2; CCR-2; CCR2; Monocyte chemoattractant protein 1 receptor; MCP-1-R; CD antigen CD192
Gene ID	60463.0
SwissProt ID	O55193
Immunogen	Synthesized peptide derived from CKR-2 . at AA range: 250-330

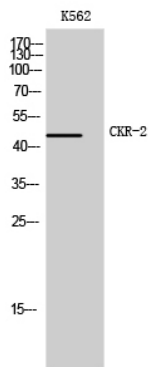
Background

CCR2 (C-C Motif Chemokine Receptor 2) is a Protein Coding gene. Diseases associated with CCR2 include idiopathic anterior

uveitis and cd3zeta deficiency. Among its related pathways are Signaling by GPCR and A-beta Pathways: uptake and Degradation. GO annotations related to this gene include G-protein coupled receptor activity and chemokine receptor activity. An important paralog of this gene is CCR9. eceptor for the CCL2, CCL7 and CCL13 chemokines. Transduces a signal by increasing intracellular calcium ion levels. Alternative coreceptor with CD4 for HIV-1 infection. hemokine CC receptors (CCRs) predominantly recognize CC chemokines. CC chemokines are distinguished by having four conserved cysteines, with the first two cysteines being adjacent to each other. There are 10 chemokine CC receptors.

Research Area

Image Data



Western Blot analysis of K562 cells using CKR-2 Polyclonal Antibody