

---

**Product Name: CIDE-B Rabbit Polyclonal Antibody****Catalog #: APRab08814**

For research use only.

**Summary**

<b>Description</b>	Rabbit polyclonal Antibody
<b>Host</b>	Rabbit
<b>Application</b>	WB,IHC,ICC/IF,ELISA
<b>Reactivity</b>	Human,Mouse
<b>Conjugation</b>	Unconjugated
<b>Modification</b>	Unmodified
<b>Isotype</b>	IgG
<b>Clonality</b>	Polyclonal
<b>Form</b>	Liquid
<b>Concentration</b>	1mg/ml
<b>Storage</b>	Aliquot and store at -20°C (valid for 12 months). Avoid freeze/thaw cycles.
<b>Shipping</b>	Ice bags
<b>Buffer</b>	Liquid in PBS containing 50% glycerol, 0.5% protective protein and 0.02% New type preservative N.
<b>Purification</b>	Affinity purification

**Application**

<b>Dilution Ratio</b>	WB 1:500-1:2000,IHC 1:100-1:300,ICC/IF 1:200-1:1000,ELISA 1:20000-1:40000
<b>Molecular Weight</b>	24kDa

**Antigen Information**

<b>Gene Name</b>	CIDEB
<b>Alternative Names</b>	CIDEB; Cell death activator CIDE-B; Cell death-inducing DFFA-like effector B
<b>Gene ID</b>	27141.0
<b>SwissProt ID</b>	Q9UHD4
<b>Immunogen</b>	The antiserum was produced against synthesized peptide derived from human CIDEB. AA range:91-140

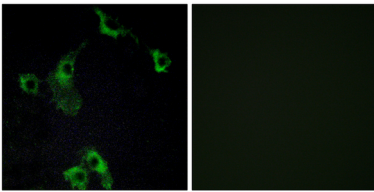
**Background**

function:Activates apoptosis.,similarity:Contains 1 CIDE-N domain.,subunit:Inhibited by DFFB. Interacts with DFFA and

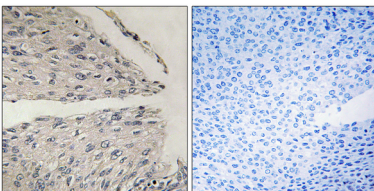
DFFB.,tissue specificity:Highly expressed in liver and small intestine and, at lower levels, in colon, kidney and spleen.,function:Activates apoptosis.,similarity:Contains 1 CIDE-N domain.,subunit:Inhibited by DFFB. Interacts with DFFA and DFFB.,tissue specificity:Highly expressed in liver and small intestine and, at lower levels, in colon, kidney and spleen.,

## Research Area

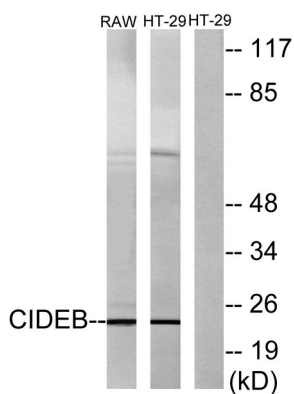
## Image Data



Immunofluorescence analysis of COS7 cells, using CIDEB Antibody. The picture on the right is blocked with the synthesized peptide.



Immunohistochemistry analysis of paraffin-embedded human cervix caecinoma tissue, using CIDEB Antibody. The picture on the right is blocked with the synthesized peptide.



Western blot analysis of lysates from HT-29 and RAW264.7 cells, using CIDEB Antibody. The lane on the right is blocked with the synthesized peptide.



Western Blot analysis of various cells using CIDE-B Polyclonal Antibody