

---

**Product Name: CHST6 Rabbit Polyclonal Antibody****Catalog #: APRab08790**

For research use only.

**Summary**

<b>Description</b>	Rabbit polyclonal Antibody
<b>Host</b>	Rabbit
<b>Application</b>	ICC/IF,ELISA
<b>Reactivity</b>	Human,Rat,Mouse
<b>Conjugation</b>	Unconjugated
<b>Modification</b>	Unmodified
<b>Isotype</b>	IgG
<b>Clonality</b>	Polyclonal
<b>Form</b>	Liquid
<b>Concentration</b>	1mg/ml
<b>Storage</b>	Aliquot and store at -20°C (valid for 12 months). Avoid freeze/thaw cycles.
<b>Shipping</b>	Ice bags
<b>Buffer</b>	Liquid in PBS containing 50% glycerol, 0.5% protective protein and 0.02% New type preservative N.
<b>Purification</b>	Affinity purification

**Application**

**Dilution Ratio** ICC/IF 1:200-1:1000,ELISA 1:10000-1:20000

**Molecular Weight**

**Antigen Information**

<b>Gene Name</b>	CHST6
<b>Alternative Names</b>	CHST6; Carbohydrate sulfotransferase 6; Corneal N-acetylglucosamine-6-O-sulfotransferase; C-GlcNAc6ST; hCGn6ST; Galactose/N-acetylglucosamine/N-acetylglucosamine 6-O-sulfotransferase 4-beta; GST4-beta; N-acetylglucosamine 6-O-sulfotransfera
<b>Gene ID</b>	4166.0
<b>SwissProt ID</b>	Q9GZX3
<b>Immunogen</b>	The antiserum was produced against synthesized peptide derived from human CHST6. AA range:331-380

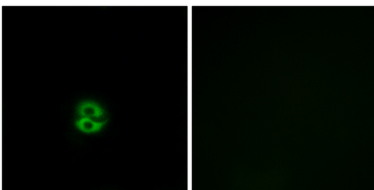
## Background

The protein encoded by this gene is an enzyme that catalyzes the transfer of a sulfate group to the GlcNAc residues of keratan. Keratan sulfate helps maintain corneal transparency. Defects in this gene are a cause of macular corneal dystrophy (MCD). [provided by RefSeq, Jan 2010],caution:PubMed:12824236 reported a Gly-204 variant, however according to their results reported in figure 1, it is a Gln-204 variant.,disease:Defects in CHST6 are the cause of macular corneal dystrophy (MCD) [MIM:217800]. MCD is an autosomal recessive disease characterized by corneal opacities. Onset occurs in the first decade, usually between ages 5 and 9. The disorder is progressive. Minute, gray, punctate opacities develop. Corneal sensitivity is usually reduced. Painful attacks with photophobia, foreign body sensations, and recurrent erosions occur in most patients. There are different types of MCD: MCD type I, in which there is a virtual absence of sulfated keratan sulfate (KS) in the serum and cornea, as determined by KS-specific antibodies; and MCD type II, in which the normal sulfated KS-antibody response is present in cornea and serum. MCD type I patients usually have a homozygous missense mutation, while MCD type II patients show a large deletion and replacement in the upstream region of CHST6. The only missense mutation for type II is Cys-50, which is heterozygous with a replacement in the upstream region on the other allele of CHST6.,function:Catalyzes the transfer of sulfate to position 6 of non-reducing N-acetylglucosamine (GlcNAc) residues of keratan. Mediates sulfation of keratan in cornea. Keratan sulfate plays a central role in maintaining corneal transparency. Acts on the non-reducing terminal GlcNAc of short and long carbohydrate substrates that have poly-N-acetyllactosamine structures.,online information:GlycoGene database,similarity:Belongs to the sulfotransferase 1 family. Gal/GlcNAc/GalNAc subfamily.,tissue specificity:Expressed in cornea. Mainly expressed in brain. Also expressed in spinal cord and trachea.,

## Research Area

Keratan sulfate biosynthesis;

## Image Data



Immunofluorescence analysis of A549 cells, using CHST6 Antibody. The picture on the right is blocked with the synthesized peptide.