
Product Name: CHST13 Rabbit Polyclonal Antibody**Catalog #: APRab08786**

For research use only.

Summary

Description	Rabbit polyclonal Antibody
Host	Rabbit
Application	WB,IHC,ICC/IF,ELISA
Reactivity	Human,Rat,Mouse
Conjugation	Unconjugated
Modification	Unmodified
Isotype	IgG
Clonality	Polyclonal
Form	Liquid
Concentration	1mg/ml
Storage	Aliquot and store at -20°C (valid for 12 months). Avoid freeze/thaw cycles.
Shipping	Ice bags
Buffer	Liquid in PBS containing 50% glycerol, 0.5% protective protein and 0.02% New type preservative N.
Purification	Affinity purification

Application

Dilution Ratio	WB 1:500-1:2000,IHC 1:100-1:300,ICC/IF 1:50-1:200,ELISA 1:20000-1:40000
Molecular Weight	39kDa

Antigen Information

Gene Name	CHST13
Alternative Names	CHST13; Carbohydrate sulfotransferase 13; Chondroitin 4-O-sulfotransferase 3; Chondroitin 4-sulfotransferase 3; C4ST-3; C4ST3
Gene ID	166012.0
SwissProt ID	Q8NET6
Immunogen	The antiserum was produced against synthesized peptide derived from human CHST13. AA range:211-260

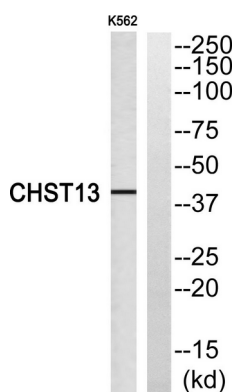
Background

The protein encoded by this gene belongs to the sulfotransferase 2 family. It is localized to the golgi membrane, and catalyzes the transfer of sulfate to the C4 hydroxyl of beta-1,4-linked N-acetylgalactosamine (GalNAc) flanked by glucuronic acid residue in chondroitin. Chondroitin sulfate constitutes the predominant proteoglycan present in cartilage and is distributed on the surfaces of many cells and extracellular matrices. [provided by RefSeq, Aug 2011],catalytic activity:3'-phosphoadenylyl sulfate + chondroitin = adenosine 3',5'-bisphosphate + chondroitin 4'-sulfate.,function:Catalyzes the transfer of sulfate to position 4 of the N-acetylgalactosamine (GalNAc) residue of chondroitin. Chondroitin sulfate constitutes the predominant proteoglycan present in cartilage and is distributed on the surfaces of many cells and extracellular matrices. Transfers sulfate to the C4 hydroxyl of beta1,4-linked GalNAc that is substituted with a beta-linked glucuronic acid at the C-3 hydroxyl. No activity toward dermatan.,similarity:Belongs to the sulfotransferase 2 family.,tissue specificity:Highly expressed in adult liver. Expressed at lower level in kidney, lymph nodes and fetal kidney.,

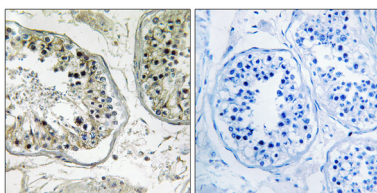
Research Area

Chondroitin sulfate biosynthesis;Sulfur metabolism;

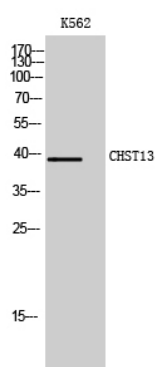
Image Data



Western blot analysis of CHST13 Antibody. The lane on the right is blocked with the CHST13 peptide.



Immunohistochemistry analysis of paraffin-embedded human testis, using CHST13 Antibody. The lane on the right is blocked with the CHST13 peptide.



Western Blot analysis of K562 cells using CHST13 Polyclonal Antibody

