

Product Name: Chr-A Rabbit Polyclonal Antibody**Catalog #: APRab08781**

For research use only.

Summary

Description	Rabbit polyclonal Antibody
Host	Rabbit
Application	WB,IHC,ICC/IF,ELISA
Reactivity	Human,Mouse,Rat
Conjugation	Unconjugated
Modification	Unmodified
Isotype	IgG
Clonality	Polyclonal
Form	Liquid
Concentration	1mg/ml
Storage	Aliquot and store at -20°C (valid for 12 months). Avoid freeze/thaw cycles.
Shipping	Ice bags
Buffer	Liquid in PBS containing 50% glycerol, 0.5% protective protein and 0.02% New type preservative N.
Purification	Affinity purification

Application

Dilution Ratio	WB 1:500-1:2000,IHC 1:100-1:300,ICC/IF 1:50-1:200,ELISA 1:5000-1:20000
Molecular Weight	68kDa

Antigen Information

Gene Name	CHGA
Alternative Names	CHGA; Chromogranin-A; CgA; Pituitary secretory protein I; SP-I
Gene ID	1113.0
SwissProt ID	P10645
Immunogen	The antiserum was produced against synthesized peptide derived from human Chr-A. AA range:311-360

Background

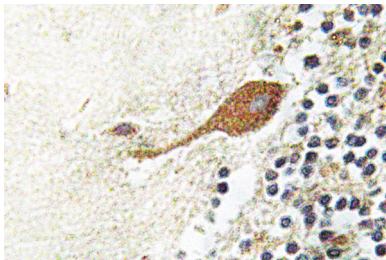
The protein encoded by this gene is a member of the chromogranin/secretogranin family of neuroendocrine secretory

proteins. It is found in secretory vesicles of neurons and endocrine cells. This gene product is a precursor to three biologically active peptides; vasostatin, pancreastatin, and parastatin. These peptides act as autocrine or paracrine negative modulators of the neuroendocrine system. Two other peptides, catestatin and chromofungin, have antimicrobial activity and antifungal activity, respectively. Two transcript variants encoding different isoforms have been found for this gene. [provided by RefSeq, Sep 2014],function:Pancreastatin strongly inhibits glucose induced insulin release from the pancreas.,miscellaneous:Binds calcium with a low-affinity.,PTM:Sulfated on tyrosine residues and/or contains sulfated glycans.,similarity:Belongs to the chromogranin/secretogranin protein family.,subcellular location:Neuroendocrine and endocrine secretory granules.,

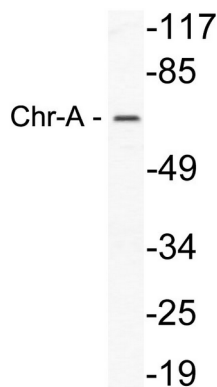
Research Area

Neuroscience

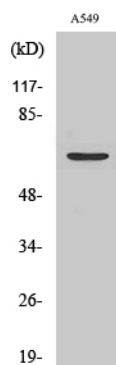
Image Data



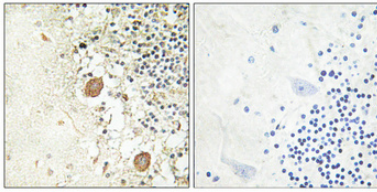
Immunohistochemistry analysis of Chr-A antibody in paraffin-embedded human brain tissue.



Western blot analysis of lysate from A549 cells, using Chr-A antibody.



Western Blot analysis of various cells using Chr-A Polyclonal Antibody



Immunohistochemical analysis of paraffin-embedded Human brain. Antibody was diluted at 1:100 (4°,overnight) . High-pressure and temperature Tris-EDTA,pH8.0 was used for antigen retrieval. Negative contrl (right) obtaned from antibody was pre-absorbed by immunogen peptide.