

Product Name: CHP Rabbit Polyclonal Antibody**Catalog #: APRab08778**

For research use only.

Summary

Description	Rabbit polyclonal Antibody
Host	Rabbit
Application	WB,ELISA
Reactivity	Human,Mouse,Rat
Conjugation	Unconjugated
Modification	Unmodified
Isotype	IgG
Clonality	Polyclonal
Form	Liquid
Concentration	1mg/ml
Storage	Aliquot and store at -20°C (valid for 12 months). Avoid freeze/thaw cycles.
Shipping	Ice bags
Buffer	Liquid in PBS containing 50% glycerol, 0.5% protective protein and 0.02% New type preservative N.
Purification	Affinity purification

Application

Dilution Ratio	WB 1:500-1:2000,ELISA 1:10000-1:20000
Molecular Weight	24kDa

Antigen Information

Gene Name	CHP1
Alternative Names	CHP1; CHP; Calcineurin B homologous protein 1; Calcineurin B-like protein; Calcium-binding protein CHP; Calcium-binding protein p22; EF-hand calcium-binding domain-containing protein p22
Gene ID	11261.0
SwissProt ID	Q99653
Immunogen	Synthesized peptide derived from the Internal region of human CHP.

Background

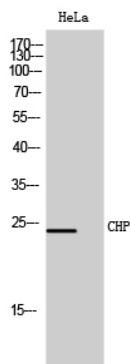
This gene encodes a phosphoprotein that binds to the Na⁺/H⁺ exchanger NHE1. This protein serves as an essential cofactor which supports the physiological activity of NHE family members and may play a role in the mitogenic regulation of NHE1. The protein shares similarity with calcineurin B and calmodulin and it is also known to be an endogenous inhibitor of calcineurin activity. [provided by RefSeq, Jul 2008],function:Required for constitutive membrane traffic. Inhibits GTPase-stimulated Na(+)/H(+) exchange. Also inhibits calcineurin phosphatase activity. Required for activity of SLC9A1/NHE1.,PTM:Both N-myristoylation and calcium-mediated conformational changes are essential for its function in exocytic traffic.,PTM:Phosphorylated; decreased phosphorylation is associated with an increase in exchange activity. The phosphorylation state may regulate the binding to NHE1.,similarity:Contains 4 EF-hand domains.,subunit:Monomer (By similarity). Specifically binds to SLC9A1/NHE1 at a domain that is critical for growth factor stimulation of exchange activity.,tissue specificity:Ubiquitously expressed. Has been found in fetal eye, lung, liver, muscle, heart, kidney, thymus and spleen.,

Research Area

MAPK_ERK_Growth;MAPK_G_Protein;Calcium;Oocyte

meiosis;Apoptosis_Inhibition;Apoptosis_Mitochondrial;Apoptosis_Overview;WNT;WNT-T CELLAxon guidance;VEGF;Natural killer cell mediated cytotoxicity;T_Cell_Receptor;B_Cell_Antigen;Long-term potentiation;Alzheimer's disease;Amyotrophic lateral sclerosis (ALS);

Image Data



Western Blot analysis of HeLa cells using CHP Polyclonal Antibody