
Product Name: Chemokine Receptor D6 Rabbit Polyclonal Antibody**Catalog #: APRab08754**

For research use only.

Summary

Description	Rabbit polyclonal Antibody
Host	Rabbit
Application	WB,IHC,ICC/IF,ELISA
Reactivity	Human,Rat,Mouse
Conjugation	Unconjugated
Modification	Unmodified
Isotype	IgG
Clonality	Polyclonal
Form	Liquid
Concentration	1mg/ml
Storage	Aliquot and store at -20°C (valid for 12 months). Avoid freeze/thaw cycles.
Shipping	Ice bags
Buffer	Liquid in PBS containing 50% glycerol, 0.5% protective protein and 0.02% New type preservative N.
Purification	Affinity purification

Application

Dilution Ratio	WB 1:500-1:2000,IHC 1:100-1:300,ICC/IF 1:200-1:1000,ELISA 1:5000-1:20000
Molecular Weight	34kDa

Antigen Information

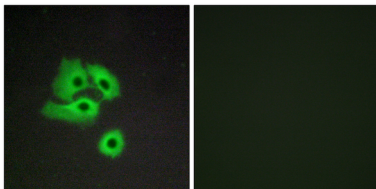
Gene Name	CCBP2
Alternative Names	CCBP2; CCR10; CMKBR9; Chemokine-binding protein 2; C-C chemokine receptor D6; Chemokine receptor CCR-10; Chemokine receptor CCR-9; Chemokine-binding protein D6
Gene ID	1238.0
SwissProt ID	O00590
Immunogen	The antiserum was produced against synthesized peptide derived from human CCBP2. AA range:335-384

Background

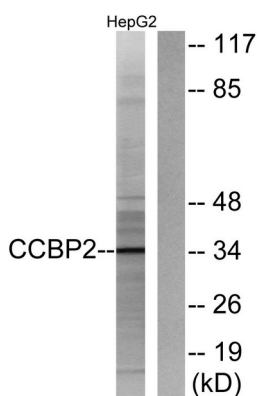
This gene encodes a beta chemokine receptor, which is predicted to be a seven transmembrane protein similar to G protein-coupled receptors. Chemokines and their receptor-mediated signal transduction are critical for the recruitment of effector immune cells to the inflammation site. This gene is expressed in a range of tissues and hemopoietic cells. The expression of this receptor in lymphatic endothelial cells and overexpression in vascular tumors suggested its function in chemokine-driven recirculation of leukocytes and possible chemokine effects on the development and growth of vascular tumors. This receptor appears to bind the majority of beta-chemokine family members; however, its specific function remains unknown. This gene is mapped to chromosome 3p21.3, a region that includes a cluster of chemokine receptor genes. [provided by RefSeq, Jul 2008],function:Receptor for C-C type chemokines including SCYA2/MCP-1, SCY3/MIP-1-alpha, SCYA5/RANTES and SCYA7/MCP-3.,similarity:Belongs to the G-protein coupled receptor 1 family.,tissue specificity:Expressed primarily in placenta and fetal liver, and found at very low levels in the lung and lymph node. Found in endothelial cells lining afferent lymphatics in dermis and lymph nodes. Also found in lymph nodes subcapsular and medullary sinuses, tonsillar lymphatic sinuses and lymphatics in mucosa and submucosa of small and large intestine and appendix. Also found in some malignant vascular tumors.,

Research Area

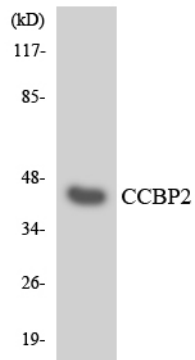
Image Data



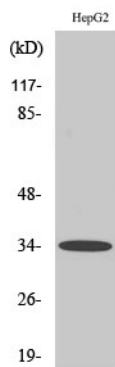
Immunofluorescence analysis of COS7 cells, using CCBP2 Antibody. The picture on the right is blocked with the synthesized peptide.



Western blot analysis of lysates from HepG2 cells, using CCBP2 Antibody. The lane on the right is blocked with the synthesized peptide.



Western blot analysis of the lysates from HT-29 cells using CCBP2 antibody.



Western Blot analysis of various cells using Chemokine Receptor D6 Polyclonal Antibody