

---

**Product Name: CHD6 Rabbit Polyclonal Antibody****Catalog #: APRab08748**

For research use only.

**Summary**

<b>Description</b>	Rabbit polyclonal Antibody
<b>Host</b>	Rabbit
<b>Application</b>	IHC, ICC/IF
<b>Reactivity</b>	Human, Rat, Mouse
<b>Conjugation</b>	Unconjugated
<b>Modification</b>	Unmodified
<b>Isotype</b>	IgG
<b>Clonality</b>	Polyclonal
<b>Form</b>	Liquid
<b>Concentration</b>	1mg/ml
<b>Storage</b>	Aliquot and store at -20°C (valid for 12 months). Avoid freeze/thaw cycles.
<b>Shipping</b>	Ice bags
<b>Buffer</b>	Liquid in PBS containing 50% glycerol, and 0.02% New type preservative N.
<b>Purification</b>	Affinity purification

**Application**

<b>Dilution Ratio</b>	IHC 1:50-1:300, ICC/IF 1:50-1:200
<b>Molecular Weight</b>	298kDa

**Antigen Information**

<b>Gene Name</b>	CHD6
<b>Alternative Names</b>	CHD5 KIAA1335 RIGB
<b>Gene ID</b>	84181.0
<b>SwissProt ID</b>	Q8TD26
<b>Immunogen</b>	Synthesized peptide derived from part region of human protein

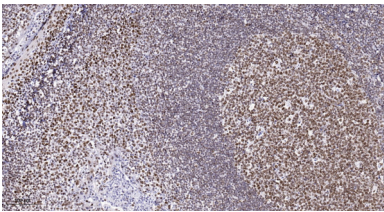
**Background**

This gene encodes a member of the SNF2/RAD54 helicase protein family. The encoded protein contains two chromodomains, a helicase domain, and an ATPase domain. Several multi-subunit protein complexes remodel chromatin to allow patterns of cell type-specific gene expression, and the encoded protein is thought to be a core member of one or more of these chromatin

remodeling complexes. The encoded protein may function as a transcriptional repressor and is involved in the cellular repression of influenza virus replication. [provided by RefSeq, Jul 2013],function:Probable transcription regulator.,PTM:Phosphorylated upon DNA damage, probably by ATM or ATR.,sequence caution:The sequence differs from position 1528 onward for unknown reasons.,similarity:Belongs to the SNF2/RAD54 helicase family.,similarity:Contains 1 helicase ATP-binding domain.,similarity:Contains 1 helicase C-terminal domain.,similarity:Contains 2 chromo domains.,tissue specificity:Ubiquitous.,

## Research Area

## Image Data



Immunohistochemical analysis of paraffin-embedded human tonsil. 1, Antibody was diluted at 1:200 (4° overnight) . 2, Tris-EDTA,pH9.0 was used for antigen retrieval. 3,Secondary antibody was diluted at 1:200 (room temperature, 45min) .