
Product Name: CGREF1 Rabbit Polyclonal Antibody**Catalog #: APRab08727**

For research use only.

Summary

Description	Rabbit polyclonal Antibody
Host	Rabbit
Application	WB,IHC,ICC/IF,ELISA
Reactivity	Human,Rat,Mouse
Conjugation	Unconjugated
Modification	Unmodified
Isotype	IgG
Clonality	Polyclonal
Form	Liquid
Concentration	1mg/ml
Storage	Aliquot and store at -20°C (valid for 12 months). Avoid freeze/thaw cycles.
Shipping	Ice bags
Buffer	Liquid in PBS containing 50% glycerol, 0.5% protective protein and 0.02% New type preservative N.
Purification	Affinity purification

Application

Dilution Ratio	WB 1:500-1:2000,IHC 1:100-1:300,ICC/IF 1:50-1:200,ELISA 1:10000-1:20000
Molecular Weight	32kDa

Antigen Information

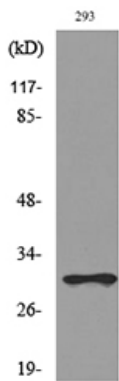
Gene Name	CGREF1
Alternative Names	CGREF1; CGR11; Cell growth regulator with EF hand domain protein 1; Cell growth regulatory gene 11 protein; Hydrophobestin
Gene ID	10669.0
SwissProt ID	Q99674
Immunogen	The antiserum was produced against synthesized peptide derived from the N-terminal region of human CGREF1. AA range:1-50

Background

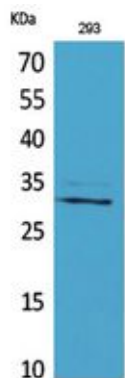
caution:The sequence shown here is derived from an Ensembl automatic analysis pipeline and should be considered as preliminary data.,function:Able to inhibit growth in several cell lines.,induction:By p53.,similarity:Contains 2 EF-hand domains.,caution:The sequence shown here is derived from an Ensembl automatic analysis pipeline and should be considered as preliminary data.,function:Able to inhibit growth in several cell lines.,induction:By p53.,similarity:Contains 2 EF-hand domains.,

Research Area

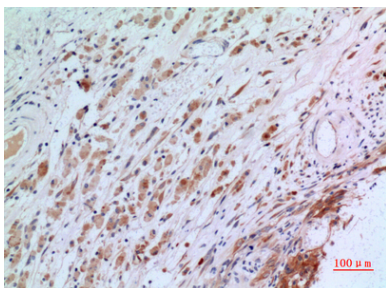
Image Data



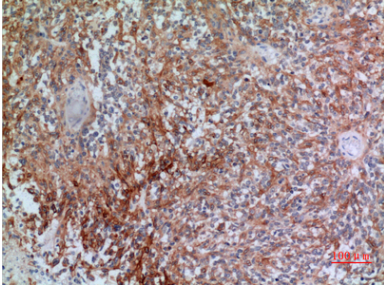
Western blot analysis of lysate from 293 cells, using CGREF1 Antibody.



Western Blot analysis of 293 cells using CGREF1 Polyclonal Antibody.. Secondary antibody was diluted at 1:20000



Immunohistochemical analysis of paraffin-embedded human-brain, antibody was diluted at 1:100



Immunohistochemical analysis of paraffin-embedded human-brain, antibody was diluted at 1:100