

Product Name: CGREF1 Rabbit Polyclonal Antibody**Catalog #: APRab08726**

For research use only.

Summary

Description	Rabbit polyclonal Antibody
Host	Rabbit
Application	WB,IHC,ICC/IF,ELISA
Reactivity	Human,Rat,Mouse
Conjugation	Unconjugated
Modification	Unmodified
Isotype	IgG
Clonality	Polyclonal
Form	Liquid
Concentration	1mg/ml
Storage	Aliquot and store at -20°C (valid for 12 months). Avoid freeze/thaw cycles.
Shipping	Ice bags
Buffer	Liquid in PBS containing 50% glycerol, 0.5% protective protein and 0.02% New type preservative N.
Purification	Affinity purification

Application

Dilution Ratio	WB 1:500-1:2000,IHC 1:100-1:300,ICC/IF 1:50-1:200,ELISA 1:20000-1:40000
Molecular Weight	31kDa

Antigen Information

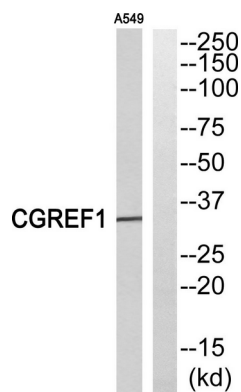
Gene Name	CGREF1
Alternative Names	CGREF1; CGR11; Cell growth regulator with EF hand domain protein 1; Cell growth regulatory gene 11 protein; Hydrophobestin
Gene ID	10669.0
SwissProt ID	Q99674
Immunogen	The antiserum was produced against synthesized peptide derived from human CGREF1. AA range:241-290

Background

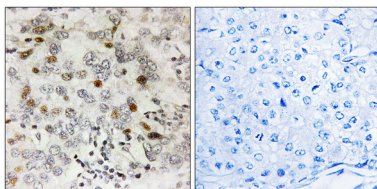
caution:The sequence shown here is derived from an Ensembl automatic analysis pipeline and should be considered as preliminary data.,function:Able to inhibit growth in several cell lines.,induction:By p53.,similarity:Contains 2 EF-hand domains.,caution:The sequence shown here is derived from an Ensembl automatic analysis pipeline and should be considered as preliminary data.,function:Able to inhibit growth in several cell lines.,induction:By p53.,similarity:Contains 2 EF-hand domains.,

Research Area

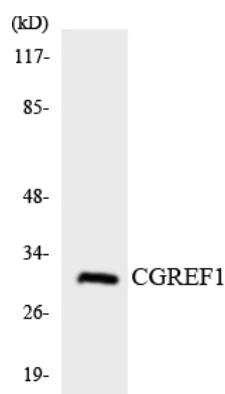
Image Data



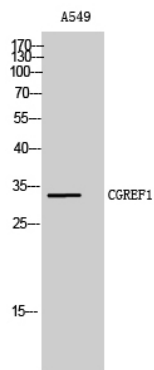
Western blot analysis of CGREF1 Antibody. The lane on the right is blocked with the CGREF1 peptide.



Immunohistochemistry analysis of paraffin-embedded human breast carcinoma, using CGREF1 Antibody. The lane on the right is blocked with the CGREF1 peptide.



Western blot analysis of the lysates from K562 cells using CGREF1 antibody.



Western Blot analysis of A549 cells using CGREF1 Polyclonal Antibody