
Product Name: cGKII Rabbit Polyclonal Antibody**Catalog #: APRab08722**

For research use only.

Summary

Description	Rabbit polyclonal Antibody
Host	Rabbit
Application	WB,IHC,ICC/IF,ELISA
Reactivity	Human,Mouse,Rat
Conjugation	Unconjugated
Modification	Unmodified
Isotype	IgG
Clonality	Polyclonal
Form	Liquid
Concentration	1mg/ml
Storage	Aliquot and store at -20°C (valid for 12 months). Avoid freeze/thaw cycles.
Shipping	Ice bags
Buffer	Liquid in PBS containing 50% glycerol, 0.5% protective protein and 0.02% New type preservative N.
Purification	Affinity purification

Application

Dilution Ratio	WB 1:500-1:2000,IHC 1:100-1:300,ICC/IF 1:50-1:200,ELISA 1:20000-1:40000
Molecular Weight	87kDa

Antigen Information

Gene Name	PRKG2
Alternative Names	PRKG2; PRKGR2; cGMP-dependent protein kinase 2; cGK 2; cGK2; cGMP-dependent protein kinase II; cGKII
Gene ID	5593.0
SwissProt ID	Q13237
Immunogen	The antiserum was produced against synthesized peptide derived from human PKG2. AA range:92-141

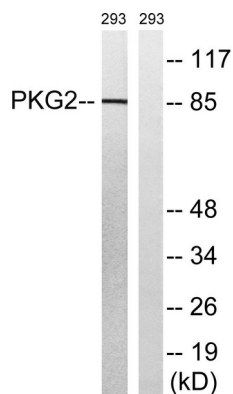
Background

This gene encodes a protein that belongs to the serine/threonine protein kinase family of proteins. The encoded protein plays a role in the regulation of fluid balance in the intestine. A similar protein in mouse is thought to regulate differentiation and proliferation of cells in the colon. Alternate splicing results in multiple transcript variants. [provided by RefSeq, Sep 2013],catalytic activity:ATP + a protein = ADP + a phosphoprotein.,enzyme regulation:Binding of cGMP results in enzyme activation.,similarity:Belongs to the protein kinase superfamily. AGC Ser/Thr protein kinase family. cGMP subfamily.,similarity:Contains 1 AGC-kinase C-terminal domain.,similarity:Contains 1 protein kinase domain.,similarity:Contains 2 cyclic nucleotide-binding domains.,tissue specificity:Highly concentrated in brain, lung and intestinal mucosa.,

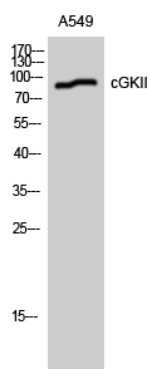
Research Area

Gap junction;Long-term depression;Olfactory transduction;

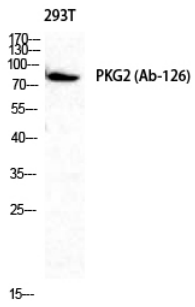
Image Data



Western blot analysis of lysates from 293 cells, treated with anisomycin 25ug/ml 30', using PKG2 Antibody. The lane on the right is blocked with the synthesized peptide.



Western Blot analysis of A549 cells using cGKII Polyclonal Antibody diluted at 1:1000



Western Blot analysis of 293T cells using cGKII Polyclonal Antibody diluted at 1 : 1000