
Product Name: CGI-43 Rabbit Polyclonal Antibody**Catalog #: APRab08721**

For research use only.

Summary

Description	Rabbit polyclonal Antibody
Host	Rabbit
Application	WB,ELISA
Reactivity	Human,Mouse,Monkey
Conjugation	Unconjugated
Modification	Unmodified
Isotype	IgG
Clonality	Polyclonal
Form	Liquid
Concentration	1mg/ml
Storage	Aliquot and store at -20°C (valid for 12 months). Avoid freeze/thaw cycles.
Shipping	Ice bags
Buffer	Liquid in PBS containing 50% glycerol, 0.5% protective protein and 0.02% New type preservative N.
Purification	Affinity purification

Application

Dilution Ratio	WB 1:500-1:2000,ELISA 1:5000-1:20000
Molecular Weight	56kDa

Antigen Information

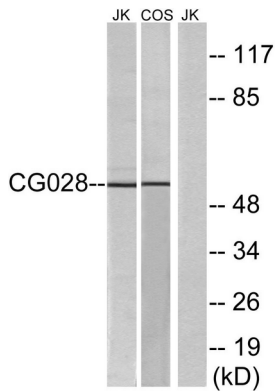
Gene Name	CCZ1/C7orf28B
Alternative Names	CCZ1; C7orf28A; CGI-43; Vacuolar fusion protein CCZ1 homolog; CCZ1B; C7orf28B; Vacuolar fusion protein CCZ1 homolog B; Vacuolar fusion protein CCZ1 homolog-like
Gene ID	221960.0
SwissProt ID	P86791/P86790
Immunogen	The antiserum was produced against synthesized peptide derived from human CG028. AA range:411-460

Background

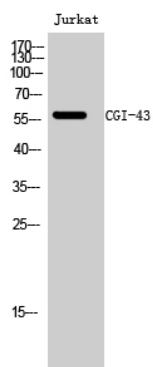
similarity:Belongs to the UPF0550 family.,similarity:Belongs to the UPF0550 family.,

Research Area

Image Data



Western blot analysis of lysates from Jurkat and COS cells, using CG028 Antibody. The lane on the right is blocked with the synthesized peptide.



Western Blot analysis of Jurkat cells using CGI-43 Polyclonal Antibody diluted at 1:500