

**Product Name: CGGBP1 Rabbit Polyclonal Antibody****Catalog #: APRab08720**

For research use only.

**Summary**

<b>Description</b>	Rabbit polyclonal Antibody
<b>Host</b>	Rabbit
<b>Application</b>	IHC, ICC/IF, ELISA
<b>Reactivity</b>	Human, Mouse
<b>Conjugation</b>	Unconjugated
<b>Modification</b>	Unmodified
<b>Isotype</b>	IgG
<b>Clonality</b>	Polyclonal
<b>Form</b>	Liquid
<b>Concentration</b>	1mg/ml
<b>Storage</b>	Aliquot and store at -20°C (valid for 12 months). Avoid freeze/thaw cycles.
<b>Shipping</b>	Ice bags
<b>Buffer</b>	Liquid in PBS containing 50% glycerol, 0.5% protective protein and 0.02% New type preservative N.
<b>Purification</b>	Affinity purification

**Application**

**Dilution Ratio** IHC 1:100-1:300, ICC/IF 1:50-1:200, ELISA 1:5000-1:10000

**Molecular Weight**

**Antigen Information**

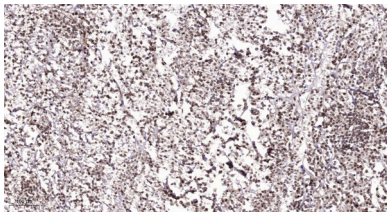
<b>Gene Name</b>	CGGBP1
<b>Alternative Names</b>	CGGBP1; CGGBP; CGG triplet repeat-binding protein 1; CGG-binding protein 1; 20 kDa CGG-binding protein; p20-CGGBP DNA-binding protein
<b>Gene ID</b>	8545.0
<b>SwissProt ID</b>	Q9UFW8
<b>Immunogen</b>	The antiserum was produced against synthesized peptide derived from human CGGBP1. AA range: 41-90

**Background**

CGGBP1 influences expression of the FMR1 gene (MIM 309550), which is associated with the fragile X mental retardation syndrome (MIM 300624), by specifically interacting with the 5-prime (CGG)<sub>n</sub>-3-prime repeat in its 5-prime UTR.[supplied by OMIM, Mar 2008],developmental stage:Expressed in fetal brain and kidney. Lower expression in fetal liver and lung.,function:Binds to nonmethylated 5'-d(CGG)(n)-3' trinucleotide repeats in the FMR1 promoter. May play a role in regulating FMR1 promoter.,miscellaneous:Binding is severely inhibited by complete or partial cytosine-specific DNA methylation of the binding motif.,PTM:Phosphorylated upon DNA damage, probably by ATM or ATR.,tissue specificity:Ubiquitous. Highly expressed in placenta, thymus, lymph nodes, cerebellum and cerebral cortex. Low expression in other regions of the brain.,

## Research Area

## Image Data



Immunohistochemical analysis of paraffin-embedded human Colon cancer. 1, Antibody was diluted at 1:200 (4° overnight) . 2, Tris-EDTA,pH9.0 was used for antigen retrieval. 3,Secondary antibody was diluted at 1:200 (room temperature, 45min) .