

---

**Product Name: c-Fgr Rabbit Polyclonal Antibody****Catalog #: APRab08701**

For research use only.

**Summary**

<b>Description</b>	Rabbit polyclonal Antibody
<b>Host</b>	Rabbit
<b>Application</b>	WB,IHC,ICC/IF,ELISA
<b>Reactivity</b>	Human,Mouse,Rat
<b>Conjugation</b>	Unconjugated
<b>Modification</b>	Unmodified
<b>Isotype</b>	IgG
<b>Clonality</b>	Polyclonal
<b>Form</b>	Liquid
<b>Concentration</b>	1mg/ml
<b>Storage</b>	Aliquot and store at -20°C (valid for 12 months). Avoid freeze/thaw cycles.
<b>Shipping</b>	Ice bags
<b>Buffer</b>	Liquid in PBS containing 50% glycerol, 0.5% protective protein and 0.02% New type preservative N.
<b>Purification</b>	Affinity purification

**Application**

<b>Dilution Ratio</b>	WB 1:500-1:2000,IHC 1:100-1:300,ICC/IF 1:50-1:200,ELISA 1:5000-1:10000
<b>Molecular Weight</b>	55kDa

**Antigen Information**

<b>Gene Name</b>	FGR
<b>Alternative Names</b>	FGR; SRC2; Tyrosine-protein kinase Fgr; Gardner-Rasheed feline sarcoma viral; v-fgr) oncogene homolog; Proto-oncogene c-Fgr; p55-Fgr; p58-Fgr; p58c-Fgr
<b>Gene ID</b>	2268.0
<b>SwissProt ID</b>	P09769
<b>Immunogen</b>	The antiserum was produced against synthesized peptide derived from human N-terminal FGR. AA range:61-110

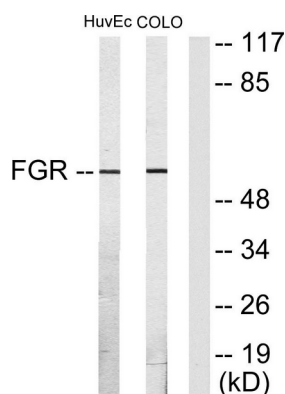
**Background**

This gene is a member of the Src family of protein tyrosine kinases (PTKs). The encoded protein contains N-terminal sites for myristylation and palmitoylation, a PTK domain, and SH2 and SH3 domains which are involved in mediating protein-protein interactions with phosphotyrosine-containing and proline-rich motifs, respectively. The protein localizes to plasma membrane ruffles, and functions as a negative regulator of cell migration and adhesion triggered by the beta-2 integrin signal transduction pathway. Infection with Epstein-Barr virus results in the overexpression of this gene. Multiple alternatively spliced variants, encoding the same protein, have been identified. [provided by RefSeq, Jul 2008],catalytic activity:ATP + a [protein]-L-tyrosine = ADP + a [protein]-L-tyrosine phosphate.,similarity:Belongs to the protein kinase superfamily. Tyr protein kinase family. SRC subfamily.,similarity:Contains 1 protein kinase domain.,similarity:Contains 1 SH2 domain.,similarity:Contains 1 SH3 domain.,subunit: Binds PTPNS1.,

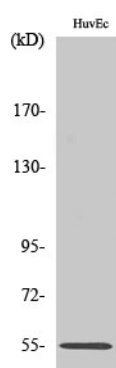
## Research Area

Chemokine;

## Image Data



Western blot analysis of lysates from HUVEC and COLO205 cells, using FGR Antibody. The lane on the right is blocked with the synthesized peptide.



Western Blot analysis of various cells using c-Fgr Polyclonal Antibody