
Product Name: CERKL Rabbit Polyclonal Antibody**Catalog #: APRab08684**

For research use only.

Summary

Description	Rabbit polyclonal Antibody
Host	Rabbit
Application	WB,IHC,ICC/IF,ELISA
Reactivity	Human,Rat,Mouse
Conjugation	Unconjugated
Modification	Unmodified
Isotype	IgG
Clonality	Polyclonal
Form	Liquid
Concentration	1mg/ml
Storage	Aliquot and store at -20°C (valid for 12 months). Avoid freeze/thaw cycles.
Shipping	Ice bags
Buffer	Liquid in PBS containing 50% glycerol, 0.5% protective protein and 0.02% New type preservative N.
Purification	Affinity purification

Application

Dilution Ratio	WB 1:500-1:2000,IHC 1:100-1:300,ICC/IF 1:50-1:200,ELISA 1:10000-1:20000
Molecular Weight	63kDa

Antigen Information

Gene Name	CERKL
Alternative Names	CERKL; Ceramide kinase-like protein
Gene ID	375298.0
SwissProt ID	Q49MI3
Immunogen	The antiserum was produced against synthesized peptide derived from human CERKL. AA range:341-390

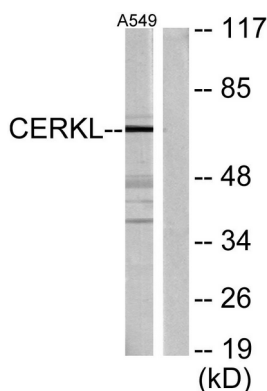
Background

This gene was initially identified as a locus (RP26) associated with an autosomal recessive form of retinitis pigmentosa (arRP)

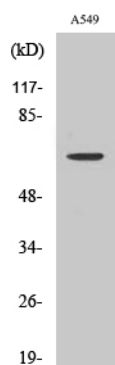
disease. This gene encodes a protein with ceramide kinase-like domains, however, the protein does not phosphorylate ceramide and its target substrate is currently unknown. This protein may be a negative regulator of apoptosis in photoreceptor cells. Mutations in this gene cause a form of retinitis pigmentosa characterized by autosomal recessive cone and rod dystrophy (arCRD). Alternative splicing of this gene results in multiple transcript variants encoding different isoforms and non-coding transcripts.[provided by RefSeq, May 2010],developmental stage:Expressed in fetal lung, kidney and brain.,disease:Defects in CERKL are the cause of retinitis pigmentosa type 26 (RP26) [MIM:608380]. RP leads to degeneration of retinal photoreceptor cells. Patients typically have night vision blindness and loss of midperipheral visual field. As their condition progresses, they lose their far peripheral visual field and eventually central vision as well. RP26 inheritance is autosomal recessive.,function:Has no detectable ceramide-kinase activity.,PTM:Phosphorylated on serine residues.,sequence caution:Wrong choice of CDS.,similarity:Contains 1 DAGKc domain.,subcellular location:Enriched in nucleoli. May shuttle between nucleus and cytoplasm. Isoform 5 is not enriched in the nucleoli.,tissue specificity:Moderately expressed in retina, kidney, lung, testis, trachea, and pancreas. Weakly expressed in brain, placenta and liver.,

Research Area

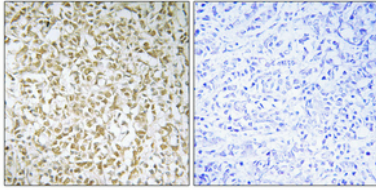
Image Data



Western blot analysis of lysates from A549 cells, using CERKL Antibody. The lane on the right is blocked with the synthesized peptide.



Western Blot analysis of various cells using CERKL Polyclonal Antibody



Immunohistochemical analysis of paraffin-embedded Human breast cancer. Antibody was diluted at 1:100 (4°,overnight) . High-pressure and temperature Tris-EDTA,pH8.0 was used for antigen retrieval. Negative contrl (right) obtaned from antibody was pre-absorbed by immunogen peptide.