

**Product Name: Cerebellin 4 Rabbit Polyclonal Antibody****Catalog #: APRab08682**

For research use only.

**Summary**

<b>Description</b>	Rabbit polyclonal Antibody
<b>Host</b>	Rabbit
<b>Application</b>	WB,IHC,ICC/IF,ELISA
<b>Reactivity</b>	Human,Mouse,Monkey
<b>Conjugation</b>	Unconjugated
<b>Modification</b>	Unmodified
<b>Isotype</b>	IgG
<b>Clonality</b>	Polyclonal
<b>Form</b>	Liquid
<b>Concentration</b>	1mg/ml
<b>Storage</b>	Aliquot and store at -20°C (valid for 12 months). Avoid freeze/thaw cycles.
<b>Shipping</b>	Ice bags
<b>Buffer</b>	Liquid in PBS containing 50% glycerol, 0.5% protective protein and 0.02% New type preservative N.
<b>Purification</b>	Affinity purification

**Application**

<b>Dilution Ratio</b>	WB 1:500-1:2000,IHC 1:100-1:300,ICC/IF 1:50-1:200,ELISA 1:20000-1:40000
<b>Molecular Weight</b>	27kDa

**Antigen Information**

<b>Gene Name</b>	CBLN4
<b>Alternative Names</b>	CBLN4; CBLNL1; Cerebellin-4; Cerebellin-like glycoprotein 1
<b>Gene ID</b>	140689.0
<b>SwissProt ID</b>	Q9NTU7
<b>Immunogen</b>	The antiserum was produced against synthesized peptide derived from human CBLN4. AA range:141-190

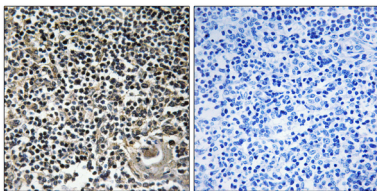
**Background**

This gene encodes a member of a family of small secreted proteins containing C1Q domains. Members of this family are

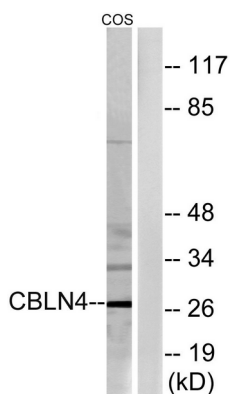
involved in regulation of neurexin signalling during synapse development. The mouse homolog of the protein encoded by this gene competes with netrin to bind to the deleted in colorectal cancer receptor. [provided by RefSeq, Aug 2012],function:May be involved in synaptic functions in the CNS. Can enable ER export and secretion of CBLN3.,similarity:Contains 1 C1q domain.,subunit:Homohexamer; disulfide-linked homotrimers. The trimers are assembled via the globular C1q domains. The trimers associate via N-terminal cysteine residues to form disulfide-linked hexamers. May interact with CBLN1, CBLN2 and CBLN3.,

## Research Area

## Image Data



Immunohistochemistry analysis of paraffin-embedded human thymus gland tissue, using CBLN4 Antibody. The picture on the right is blocked with the synthesized peptide.



Western blot analysis of lysates from COS cells, using CBLN4 Antibody. The lane on the right is blocked with the synthesized peptide.



Western Blot analysis of various cells using Cerebellin 4 Polyclonal Antibody