

---

**Product Name: Cerebellin 3 Rabbit Polyclonal Antibody****Catalog #: APRab08681**

For research use only.

**Summary**

|                      |   |
|----------------------|---|
| <b>Description</b>   | Rabbit polyclonal Antibody  |
| <b>Host</b>          | Rabbit  |
| <b>Application</b>   | WB,IHC,ICC/IF,ELISA   |
| <b>Reactivity</b>    | Human,Mouse   |
| <b>Conjugation</b>   | Unconjugated  |
| <b>Modification</b>  | Unmodified  |
| <b>Isotype</b>       | IgG   |
| <b>Clonality</b>     | Polyclonal  |
| <b>Form</b>          | Liquid  |
| <b>Concentration</b> | 1mg/ml  |
| <b>Storage</b>       | Aliquot and store at -20°C (valid for 12 months). Avoid freeze/thaw cycles.                       |
| <b>Shipping</b>      | Ice bags  |
| <b>Buffer</b>        | Liquid in PBS containing 50% glycerol, 0.5% protective protein and 0.02% New type preservative N. |
| <b>Purification</b>  | Affinity purification   |

**Application**

|                         |   |
|-------------------------|---|
| <b>Dilution Ratio</b>   | WB 1:500-1:2000,IHC 1:100-1:300,ICC/IF 1:50-1:200,ELISA 1:20000-1:40000 |
| <b>Molecular Weight</b> | 27kDa   |

**Antigen Information**

|                          |   |
|--------------------------|---|
| <b>Gene Name</b>         | CBLN3   |
| <b>Alternative Names</b> | CBLN3; Cerebellin-3   |
| <b>Gene ID</b>           | 643866.0  |
| <b>SwissProt ID</b>      | Q6UW01  |
| <b>Immunogen</b>         | The antiserum was produced against synthesized peptide derived from human CBLN3. AA range:131-180 |

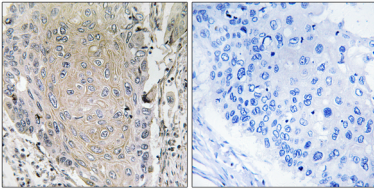
**Background**

Members of the precerebellin family, such as CBLN3, contain a cerebellin motif (see CBLN1; MIM 600432) and a C-terminal C1q

signature domain (see MIM 120550) that mediates trimeric assembly of atypical collagen complexes. However, precerebellins do not contain a collagen motif, suggesting that they are not conventional components of the extracellular matrix (Pang et al., 2000 [PubMed 10964938]).[supplied by OMIM, Aug 2009],function:May be involved in synaptic functions in the CNS.,similarity:Contains 1 C1q domain.,subcellular location:Secretion depends probably on a association with CBLN1 or perhaps CBLN4 but not on CBLN2.,subunit:Heterohexamer; disulfide-linked heterotrimers. Does not homooligomerize, but probably forms a complex with at least CBLN1. May interact with CBLN2 and CBLN4.,

## Research Area

## Image Data



Immunohistochemistry analysis of paraffin-embedded human lung carcinoma tissue, using CBLN3 Antibody. The picture on the right is blocked with the synthesized peptide.