
Product Name: Cerebellin 2 Rabbit Polyclonal Antibody**Catalog #: APRab08680**

For research use only.

Summary

Description	Rabbit polyclonal Antibody
Host	Rabbit
Application	WB,ELISA
Reactivity	Human,Mouse,Rat,Monkey
Conjugation	Unconjugated
Modification	Unmodified
Isotype	IgG
Clonality	Polyclonal
Form	Liquid
Concentration	1mg/ml
Storage	Aliquot and store at -20°C (valid for 12 months). Avoid freeze/thaw cycles.
Shipping	Ice bags
Buffer	Liquid in PBS containing 50% glycerol, 0.5% protective protein and 0.02% New type preservative N.
Purification	Affinity purification

Application

Dilution Ratio	WB 1:500-1:2000,ELISA 1:20000-1:40000
Molecular Weight	24kDa

Antigen Information

Gene Name	CBLN2
Alternative Names	CBLN2; Cerebellin-2
Gene ID	147381.0
SwissProt ID	Q8IUJ8
Immunogen	The antiserum was produced against synthesized peptide derived from human CBLN2. AA range:161-210

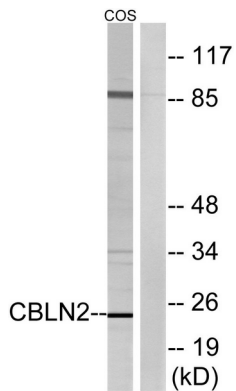
Background

similarity:Contains 1 C1q domain.,subunit:May interact with CBLN1, CBLN3 and CBLN4.,similarity:Contains 1 C1q

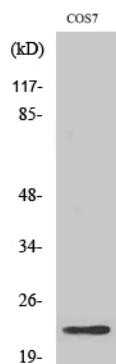
domain.,subunit:May interact with CBLN1, CBLN3 and CBLN4.,

Research Area

Image Data



Western blot analysis of lysates from COS cells, using CBLN2 Antibody. The lane on the right is blocked with the synthesized peptide.



Western Blot analysis of various cells using Cerebellin 2 Polyclonal Antibody