
Product Name: CEP78 Rabbit Polyclonal Antibody**Catalog #: APRab08674**

For research use only.

Summary

Description	Rabbit polyclonal Antibody
Host	Rabbit
Application	WB,IHC,ICC/IF,ELISA
Reactivity	Human,Mouse
Conjugation	Unconjugated
Modification	Unmodified
Isotype	IgG
Clonality	Polyclonal
Form	Liquid
Concentration	1mg/ml
Storage	Aliquot and store at -20°C (valid for 12 months). Avoid freeze/thaw cycles.
Shipping	Ice bags
Buffer	Liquid in PBS containing 50% glycerol, 0.5% protective protein and 0.02% New type preservative N.
Purification	Affinity purification

Application

Dilution Ratio	WB 1:500-1:2000,IHC 1:100-1:300,ICC/IF 1:50-1:200,ELISA 1:10000-1:20000
Molecular Weight	80kDa

Antigen Information

Gene Name	CEP78
Alternative Names	CEP78; C9orf81; Centrosomal protein of 78 kDa; Cep78
Gene ID	84131.0
SwissProt ID	Q5JTW2
Immunogen	The antiserum was produced against synthesized peptide derived from human CEP78. AA range:301-350

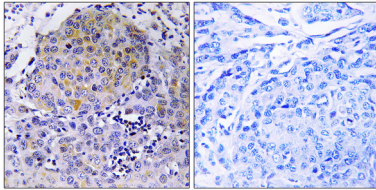
Background

similarity:Belongs to the CEP78 family.,similarity:Contains 3 LRR (leucine-rich) repeats.,similarity:Belongs to the CEP78

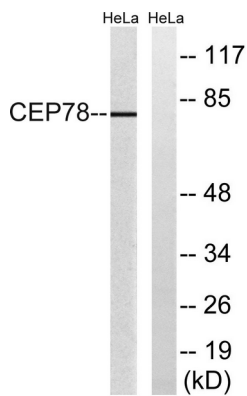
family.,similarity:Contains 3 LRR (leucine-rich) repeats.,

Research Area

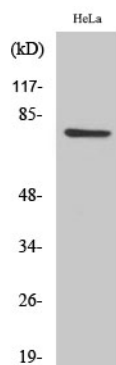
Image Data



Immunohistochemistry analysis of paraffin-embedded human breast carcinoma tissue, using CEP78 Antibody. The picture on the right is blocked with the synthesized peptide.



Western blot analysis of lysates from HeLa cells, using CEP78 Antibody. The lane on the right is blocked with the synthesized peptide.



Western Blot analysis of various cells using CEP78 Polyclonal Antibody