

---

**Product Name: CEP135 Rabbit Polyclonal Antibody****Catalog #: APRab08658**

For research use only.

**Summary**

<b>Description</b>	Rabbit polyclonal Antibody
<b>Host</b>	Rabbit
<b>Application</b>	WB,IHC,ICC/IF,ELISA
<b>Reactivity</b>	Human,Mouse
<b>Conjugation</b>	Unconjugated
<b>Modification</b>	Unmodified
<b>Isotype</b>	IgG
<b>Clonality</b>	Polyclonal
<b>Form</b>	Liquid
<b>Concentration</b>	1mg/ml
<b>Storage</b>	Aliquot and store at -20°C (valid for 12 months). Avoid freeze/thaw cycles.
<b>Shipping</b>	Ice bags
<b>Buffer</b>	Liquid in PBS containing 50% glycerol, 0.5% protective protein and 0.02% New type preservative N.
<b>Purification</b>	Affinity purification

**Application**

<b>Dilution Ratio</b>	WB 1:500-1:2000,IHC 1:100-1:300,ICC/IF 1:50-1:200,ELISA 1:20000-1:40000
<b>Molecular Weight</b>	134kDa

**Antigen Information**

<b>Gene Name</b>	CEP135
<b>Alternative Names</b>	CEP135; CEP4; KIAA0635; Centrosomal protein of 135 kDa; Cep135; Centrosomal protein 4
<b>Gene ID</b>	9662.0
<b>SwissProt ID</b>	Q66GS9
<b>Immunogen</b>	The antiserum was produced against synthesized peptide derived from human CEP135. AA range:1081-1130

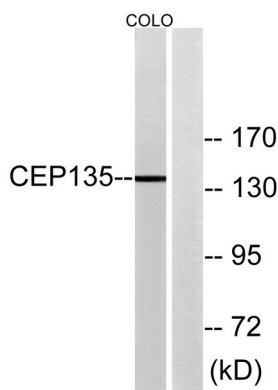
**Background**

centrosomal protein 135(CEP135) Homo sapiens This gene encodes a centrosomal protein, which acts as a scaffolding protein

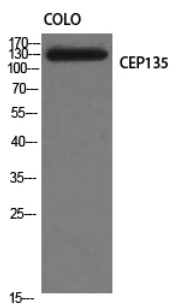
during early centriole biogenesis, and is also required for centriole-centriole cohesion during interphase. Mutations in this gene are associated with autosomal recessive primary microcephaly-8. [provided by RefSeq, Jun 2012],similarity:Belongs to the CEP135/TSGA10 family.,

## Research Area

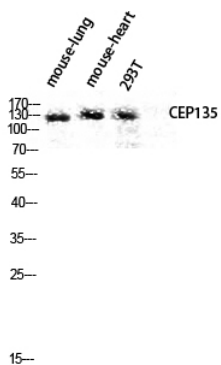
## Image Data



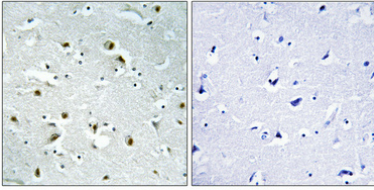
Western blot analysis of lysates from COLO cells, using CEP135 Antibody. The lane on the right is blocked with the synthesized peptide.



Western Blot analysis of COLO cells using CEP135 Polyclonal Antibody diluted at 1:1000



Western blot analysis of mouse-lung mouse-heart 293T lysis using CEP135 antibody. Antibody was diluted at 1:1000



Immunohistochemical analysis of paraffin-embedded Human brain. Antibody was diluted at 1:100 (4°, overnight) . High-pressure and temperature Tris-EDTA, pH8.0 was used for antigen retrieval. Negative control (right) obtained from antibody was pre-absorbed by immunogen peptide.