

Product Name: Centrobins Rabbit Polyclonal Antibody**Catalog #: APRab08657**

For research use only.

Summary

Description	Rabbit polyclonal Antibody
Host	Rabbit
Application	WB,IHC,ICC/IF,ELISA
Reactivity	Human,Rat,Mouse
Conjugation	Unconjugated
Modification	Unmodified
Isotype	IgG
Clonality	Polyclonal
Form	Liquid
Concentration	1mg/ml
Storage	Aliquot and store at -20°C (valid for 12 months). Avoid freeze/thaw cycles.
Shipping	Ice bags
Buffer	Liquid in PBS containing 50% glycerol, 0.5% protective protein and 0.02% New type preservative N.
Purification	Affinity purification

Application

Dilution Ratio	WB 1:500-1:2000,IHC 1:100-1:300,ICC/IF 1:50-1:200,ELISA 1:5000-1:10000
Molecular Weight	100kDa

Antigen Information

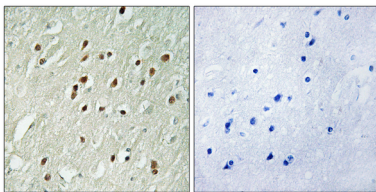
Gene Name	CNTROB
Alternative Names	CNTROB; LIP8; PP1221; Centrobins; Centrosomal BRCA2-interacting protein; LYST-interacting protein 8
Gene ID	116840.0
SwissProt ID	Q8N137
Immunogen	The antiserum was produced against synthesized peptide derived from human CNTROB. AA range:591-640

Background

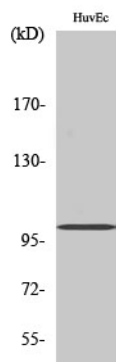
This gene encodes a centrosomal protein that interacts with BRCA2, and is required for centriole duplication and cytokinesis. Alternatively spliced transcript variants encoding different isoforms have been described for this gene. [provided by RefSeq, Aug 2011],developmental stage:Preferentially incorporated into the newly assembled daughter centriole during centriole assembly at the late G1 or early S phase. Remains in the daughter centrioles throughout the cell cycle. At the next cycle of centriole duplication, its amount on the original daughter centriole eventually decreases.,function:Required for centriole duplication. Inhibition of centriole duplication leading to defects in cytokinesis.,PTM:Phosphorylated upon DNA damage, probably by ATM or ATR.,sequence caution:Wrong choice of frame.,subcellular location:Centriole-associated, asymmetrically localizes to the daughter centriole.,subunit:Interacts with LYST.,tissue specificity:Widely expressed (at protein level). Highly expressed in testis. Also expressed in spleen, thymus, prostate, small intestine, colon and peripheral blood leukocytes.,

Research Area

Image Data



Immunohistochemistry analysis of paraffin-embedded human brain, using CNTROB Antibody. The picture on the right is blocked with the synthesized peptide.



Western Blot analysis of various cells using Centrobins Polyclonal Antibody