

**Product Name: Centriolin Rabbit Polyclonal Antibody****Catalog #: APRab08656**

For research use only.

**Summary**

<b>Description</b>	Rabbit polyclonal Antibody
<b>Host</b>	Rabbit
<b>Application</b>	IHC, ICC/IF, ELISA
<b>Reactivity</b>	Human, Rat, Mouse
<b>Conjugation</b>	Unconjugated
<b>Modification</b>	Unmodified
<b>Isotype</b>	IgG
<b>Clonality</b>	Polyclonal
<b>Form</b>	Liquid
<b>Concentration</b>	1mg/ml
<b>Storage</b>	Aliquot and store at -20°C (valid for 12 months). Avoid freeze/thaw cycles.
<b>Shipping</b>	Ice bags
<b>Buffer</b>	Liquid in PBS containing 50% glycerol, 0.5% protective protein and 0.02% New type preservative N.
<b>Purification</b>	Affinity purification

**Application**

**Dilution Ratio** IHC 1:100-1:300, ICC/IF 1:50-1:200, ELISA 1:20000-1:40000

**Molecular Weight**

**Antigen Information**

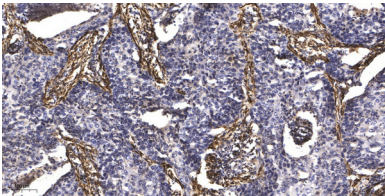
<b>Gene Name</b>	CCP110
<b>Alternative Names</b>	CCP110; CEP110; CP110; KIAA0419; Centriolar coiled-coil protein of 110 kDa; Centrosomal protein of 110 kDa; CP110; Cep110
<b>Gene ID</b>	9738.0
<b>SwissProt ID</b>	O43303
<b>Immunogen</b>	The antiserum was produced against synthesized peptide derived from human CEP110. AA range:850-900

**Background**

function:Necessary for centrosome duplication. Collaborates with CEP97, being involved in the suppression of a cilia assembly program. Required for correct spindle formation and has a role in regulating cytokinesis and genome stability via cooperation with CALM1 and CETN2.,induction:Up-regulated during the transition from G1 to S phase of the cell cycle. The highest levels are observed in S phase, after which the levels decrease markedly.,PTM:Phosphorylated by CDKs.,subunit:Interacts with CALM1, CETN2 and CEP97.,tissue specificity:Highly expressed in testis. Detected at intermediate levels in spleen, thymus, prostate, small intestine, colon and peripheral blood leukocytes.,function:Necessary for centrosome duplication. Collaborates with CEP97, being involved in the suppression of a cilia assembly program. Required for correct spindle formation and has a role in regulating cytokinesis and genome stability via cooperation with CALM1 and CETN2.,induction:Up-regulated during the transition from G1 to S phase of the cell cycle. The highest levels are observed in S phase, after which the levels decrease markedly.,PTM:Phosphorylated by CDKs.,subunit:Interacts with CALM1, CETN2 and CEP97.,tissue specificity:Highly expressed in testis. Detected at intermediate levels in spleen, thymus, prostate, small intestine, colon and peripheral blood leukocytes.,

## Research Area

## Image Data



Immunohistochemical analysis of paraffin-embedded human Squamous cell carcinoma of lung. 1, Antibody was diluted at 1:200 (4° overnight) . 2, Tris-EDTA,pH9.0 was used for antigen retrieval. 3,Secondary antibody was diluted at 1:200 (room temperature, 45min) .