

Product Name: CDYL2 Rabbit Polyclonal Antibody
Catalog #: APRab08600



Summary

Production Name	CDYL2 Rabbit Polyclonal Antibody
Description	Rabbit Polyclonal Antibody
Host	Rabbit
Application	WB,IHC-P,IF-P,IF-F,ICC/IF,ICC,ELISA
Reactivity	Human,Rat,Mouse

Performance

Conjugation	Unconjugated
Modification	Unmodified
Isotype	IgG
Clonality	Polyclonal
Form	Liquid
Storage	Store at 4°C short term. Aliquot and store at -20°C long term. Avoid freeze/thaw cycles.
Buffer	Liquid in PBS containing 50% glycerol, 0.5% protective protein and 0.02% New type preservative N.
Purification	Affinity purification

Immunogen

Gene Name	CDYL2
Alternative Names	CDYL2; Chromodomain Y-like protein 2; CDY-like 2
Gene ID	124359.0
SwissProt ID	Q8N8U2.The antiserum was produced against synthesized peptide derived from human CDYL2. AA range:31-80

Application

Dilution Ratio	WB 1:500-1:2000, IHC-P 1:100-1:300, ICC 1:200-1:1000, ELISA 1:20000, IF-P/IF-F/ICC/IF 1:50-200
Molecular Weight	56kDa

Product Name: CDYL2 Rabbit Polyclonal Antibody
Catalog #: APRab08600

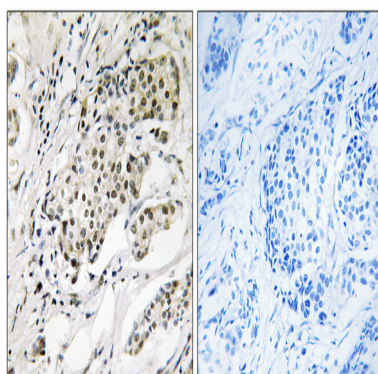


Background

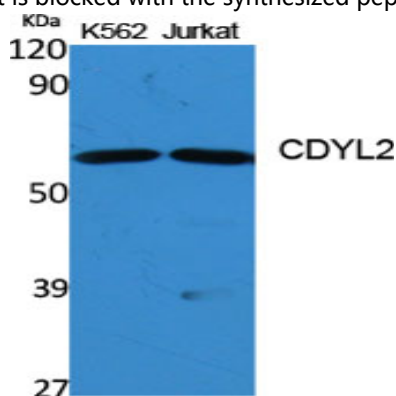
similarity:Contains 1 chromo domain.,tissue specificity:Ubiquitously expressed.,similarity:Contains 1 chromo domain.,tissue specificity:Ubiquitously expressed.,

Research Area

Image Data

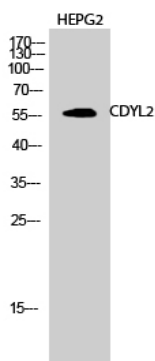


Immunohistochemistry analysis of paraffin-embedded human breast carcinoma, using CDYL2 Antibody. The picture on the right is blocked with the synthesized peptide.



Western Blot analysis of various cells using CDYL2 Polyclonal Antibody diluted at 1: 1000 cells nucleus extracted by Minute TM Cytoplasmic and Nuclear Fractionation kit (SC-003, Inventbiotech, MN, USA) .

Product Name: CDYL2 Rabbit Polyclonal Antibody
Catalog #: APRab08600



Western Blot analysis of HEPG2 cells using CDYL2 Polyclonal Antibody diluted at 1: 1000 cells nucleus extracted by Minute
TM Cytoplasmic and Nuclear Fractionation kit (SC-003, Inventbiotech, MN, USA) .

Note

For research use only.