
Product Name: Cdx2 Rabbit Polyclonal Antibody**Catalog #: APRab08594**

For research use only.

Summary

Description	Rabbit polyclonal Antibody
Host	Rabbit
Application	WB,ELISA
Reactivity	Human,Mouse,Rat
Conjugation	Unconjugated
Modification	Unmodified
Isotype	IgG
Clonality	Polyclonal
Form	Liquid
Concentration	1mg/ml
Storage	Aliquot and store at -20°C (valid for 12 months). Avoid freeze/thaw cycles.
Shipping	Ice bags
Buffer	Liquid in PBS containing 50% glycerol, 0.5% protective protein and 0.02% New type preservative N.
Purification	Affinity purification

Application

Dilution Ratio	WB 1:500-1:2000,ELISA 1:5000-1:10000
Molecular Weight	45kDa

Antigen Information

Gene Name	CDX2
Alternative Names	CDX2; CDX3; Homeobox protein CDX-2; CDX-3; Caudal-type homeobox protein 2
Gene ID	1045.0
SwissProt ID	Q99626
Immunogen	The antiserum was produced against synthesized peptide derived from human CDX2. AA range:249-298

Background

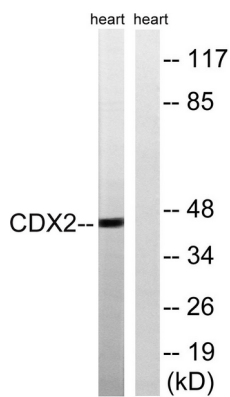
This gene is a member of the caudal-related homeobox transcription factor gene family. The encoded protein is a major

regulator of intestine-specific genes involved in cell growth and differentiation. This protein also plays a role in early embryonic development of the intestinal tract. Aberrant expression of this gene is associated with intestinal inflammation and tumorigenesis. [provided by RefSeq, Jan 2012],function:Involved in the transcriptional regulation of multiple genes expressed in the intestinal epithelium. Important in broad range of functions from early differentiation to maintenance of the intestinal epithelial lining of both the small and large intestine.,PTM:Phosphorylation of Ser-60 mediates the transactivation capacity.,similarity:Belongs to the Caudal homeobox family.,similarity:Contains 1 homeobox DNA-binding domain.,

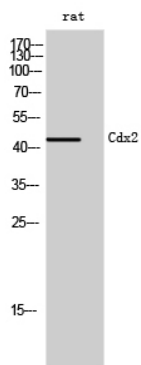
Research Area

Stem Cells

Image Data



Western blot analysis of lysates from rat heart, using CDX2 Antibody. The lane on the right is blocked with the synthesized peptide.



Western Blot analysis of rat cells using Cdx2 Polyclonal Antibody.