

Product Name: CDR1 Rabbit Polyclonal Antibody**Catalog #: APRab08584**

For research use only.

Summary

Description	Rabbit polyclonal Antibody
Host	Rabbit
Application	WB,ELISA
Reactivity	Human,Rat,Mouse
Conjugation	Unconjugated
Modification	Unmodified
Isotype	IgG
Clonality	Polyclonal
Form	Liquid
Concentration	1mg/ml
Storage	Aliquot and store at -20°C (valid for 12 months). Avoid freeze/thaw cycles.
Shipping	Ice bags
Buffer	Liquid in PBS containing 50% glycerol, and 0.02% New type preservative N.
Purification	Affinity purification

Application

Dilution Ratio	WB 1:500-1:2000,ELISA 1:5000-1:20000
Molecular Weight	28kDa

Antigen Information

Gene Name	CDR1
Alternative Names	
Gene ID	1038.0
SwissProt ID	P51861
Immunogen	Synthesized peptide derived from part region of human protein

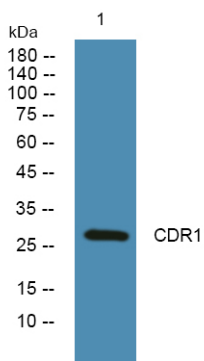
Background

cerebellar degeneration related protein 1(CDR1) Homo sapiens Autoantibodies directed against the protein encoded by this intronless gene have been found in some patients with paraneoplastic cerebellar degeneration. The encoded protein contains several hexapeptide repeats. [provided by RefSeq, Jan 2010],disease:CDR1 is one of the target molecules recognized by

autoantibodies in patients with paraneoplastic cerebellar degeneration.,sequence caution:Frameshifts in positions 134, 176.,tissue specificity:Brain; predominantly expressed in normal neuroectodermal tissues and in certain malignant tumors.,

Research Area

Image Data



Western blot analysis of lysates from KB cells, CDR1 Rabbit Polyclonal Antibody was diluted at 1:1000, 4° over night