
Product Name: CDO Rabbit Polyclonal Antibody**Catalog #: APRab08582**

For research use only.

Summary

Description	Rabbit polyclonal Antibody
Host	Rabbit
Application	ICC/IF,ELISA
Reactivity	Human,Rat,Mouse
Conjugation	Unconjugated
Modification	Unmodified
Isotype	IgG
Clonality	Polyclonal
Form	Liquid
Concentration	1mg/ml
Storage	Aliquot and store at -20°C (valid for 12 months). Avoid freeze/thaw cycles.
Shipping	Ice bags
Buffer	Liquid in PBS containing 50% glycerol, 0.5% protective protein and 0.02% New type preservative N.
Purification	Affinity purification

Application

Dilution Ratio ICC/IF 1:200-1:1000,ELISA 1:5000-1:20000

Molecular Weight

Antigen Information

Gene Name	CDON
Alternative Names	CDON; CDO; Cell adhesion molecule-related/down-regulated by oncogenes
Gene ID	50937.0
SwissProt ID	Q4KMG0
Immunogen	The antiserum was produced against synthesized peptide derived from human CDON. AA range:511-560

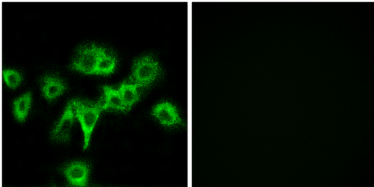
Background

This gene encodes a cell surface receptor that is a member of the immunoglobulin superfamily. The encoded protein contains

three fibronectin type III domains and five immunoglobulin-like C2-type domains. This protein is a member of a cell-surface receptor complex that mediates cell-cell interactions between muscle precursor cells and positively regulates myogenesis. [provided by RefSeq, Aug 2011],function:Component of a cell-surface receptor complex that mediates cell-cell interactions between muscle precursor cells. Promotes differentiation of myogenic cells.,PTM:N-glycosylated.,similarity:Contains 3 fibronectin type-III domains.,similarity:Contains 5 Ig-like C2-type (immunoglobulin-like) domains.,subunit:Part of a complex that contains BOC, CDON, NEO1, cadherins and CTNNB1. Interacts with NTN3.,

Research Area

Image Data



Immunofluorescence analysis of HeLa cells, using CDON Antibody. The picture on the right is blocked with the synthesized peptide.