
Product Name: CDK5 Activator-binding C42 Rabbit Polyclonal Antibody**Catalog #: APRab08565**

For research use only.

Summary

Description	Rabbit polyclonal Antibody
Host	Rabbit
Application	IHC,ICC/IF,ELISA
Reactivity	Human,Rat,Mouse
Conjugation	Unconjugated
Modification	Unmodified
Isotype	IgG
Clonality	Polyclonal
Form	Liquid
Concentration	1mg/ml
Storage	Aliquot and store at -20°C (valid for 12 months). Avoid freeze/thaw cycles.
Shipping	Ice bags
Buffer	Liquid in PBS containing 50% glycerol, 0.5% protective protein and 0.02% New type preservative N.
Purification	Affinity purification

Application

Dilution Ratio IHC 1:100-1:300,ICC/IF 1:50-1:200,ELISA 1:10000-1:20000

Molecular Weight

Antigen Information

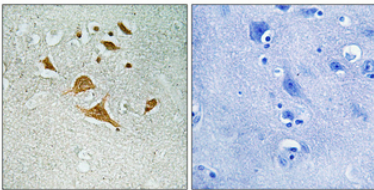
Gene Name	CDK5RAP1
Alternative Names	CDK5RAP1; C20orf34; CGI-05; HSPC167; CDK5 regulatory subunit-associated protein 1; CDK5 activator-binding protein C42
Gene ID	51654.0
SwissProt ID	Q96SZ6
Immunogen	The antiserum was produced against synthesized peptide derived from human CDK5RAP1. AA range:251-300

Background

This gene encodes a regulator of cyclin-dependent kinase 5 activity. This protein has also been reported to modify RNA by adding a methylthio-group and may thus have a dual function as an RNA methylthiotransferase and as an inhibitor of cyclin-dependent kinase 5 activity. Alternative splicing results in multiple transcript variants that encode different isoforms. [provided by RefSeq, May 2013],cofactor: Binds 2 4Fe-4S clusters. One cluster is coordinated with 3 cysteines and an exchangeable S-adenosyl-L-methionine.,function: Specifically inhibits CDK5 activation by CDK5R1.,sequence caution: Translated as Glu.,similarity: Belongs to the methylthiotransferase family. MiaB subfamily.,similarity: Contains 1 MTTase N-terminal domain.,similarity: Contains 1 TRAM domain.,subunit: Interacts with CDK5R1 (p35 form). CDK5RAP1, CDK5RAP2 and CDK5RAP3 show competitive binding to CDK5R1. Forms a complex with CDK5R1 and CDK5.,tissue specificity: Widely expressed. Expressed in heart, brain, placenta, lung, liver, skeletal muscle, kidney and pancreas.,

Research Area

Image Data



Immunohistochemical analysis of paraffin-embedded Human brain. Antibody was diluted at 1:100 (4°,overnight) . High-pressure and temperature Tris-EDTA,pH8.0 was used for antigen retrieval. Negative contrl (right) obtained from antibody was pre-absorbed by immunogen peptide.