

Product Name: Cdc7 Rabbit Polyclonal Antibody**Catalog #: APRab08531**

For research use only.

Summary

Description	Rabbit polyclonal Antibody
Host	Rabbit
Application	WB,IHC,ICC/IF,ELISA
Reactivity	Human,Rat,Mouse
Conjugation	Unconjugated
Modification	Unmodified
Isotype	IgG
Clonality	Polyclonal
Form	Liquid
Concentration	1mg/ml
Storage	Aliquot and store at -20°C (valid for 12 months). Avoid freeze/thaw cycles.
Shipping	Ice bags
Buffer	Liquid in PBS containing 50% glycerol, 0.5% protective protein and 0.02% New type preservative N.
Purification	Affinity purification

Application

Dilution Ratio	WB 1:500-1:2000,IHC 1:100-1:300,ICC/IF 1:50-1:200,ELISA 1:5000-1:10000
Molecular Weight	70kDa

Antigen Information

Gene Name	CDC7
Alternative Names	CDC7; CDC7L1; Cell division cycle 7-related protein kinase; CDC7-related kinase; HsCdc7; huCdc7
Gene ID	8317.0
SwissProt ID	O00311
Immunogen	The antiserum was produced against synthesized peptide derived from human CDC7. AA range:1-50

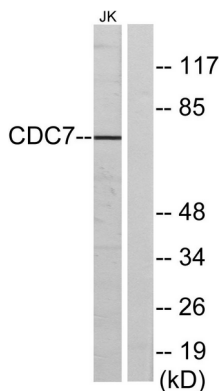
Background

This gene encodes a cell division cycle protein with kinase activity that is critical for the G1/S transition. The yeast homolog is also essential for initiation of DNA replication as cell division occurs. Overexpression of this gene product may be associated with neoplastic transformation for some tumors. Multiple alternatively spliced transcript variants that encode the same protein have been detected. [provided by RefSeq, Aug 2008],alternative products:A number of isoforms may be produced,catalytic activity:ATP + a protein = ADP + a phosphoprotein.,cofactor:Magnesium.,function:Seems to phosphorylate critical substrates that regulate the G1/S phase transition and/or DNA replication. Can phosphorylates MCM2 and MCM3.,similarity:Belongs to the protein kinase superfamily.,similarity:Belongs to the protein kinase superfamily. Ser/Thr protein kinase family. CDC7 subfamily.,similarity:Contains 1 protein kinase domain.,subunit:Forms a complex with either DBF4/DBF4A or DBF4B, leading to the activation of the kinase activity.,

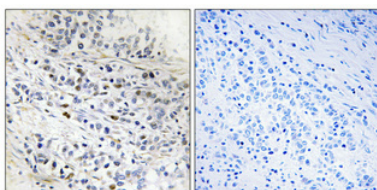
Research Area

Cell_Cycle_G1S;Cell_Cycle_G2M_DNA;

Image Data



Western blot analysis of lysates from Jurkat cells, using CDC7 Antibody. The lane on the right is blocked with the synthesized peptide.



Immunohistochemical analysis of paraffin-embedded Human lung cancer. Antibody was diluted at 1:100 (4°,overnight) . High-pressure and temperature Tris-EDTA,pH8.0 was used for antigen retrieval. Negative contrl (right) obtained from antibody was pre-absorbed by immunogen peptide.