
Product Name: Cdc37 Rabbit Polyclonal Antibody**Catalog #: APRab08514**

For research use only.

Summary

Description	Rabbit polyclonal Antibody
Host	Rabbit
Application	WB,IHC,ICC/IF,ELISA
Reactivity	Human,Mouse,Rat,Monkey
Conjugation	Unconjugated
Modification	Unmodified
Isotype	IgG
Clonality	Polyclonal
Form	Liquid
Concentration	1mg/ml
Storage	Aliquot and store at -20°C (valid for 12 months). Avoid freeze/thaw cycles.
Shipping	Ice bags
Buffer	Liquid in PBS containing 50% glycerol, 0.5% protective protein and 0.02% New type preservative N.
Purification	Affinity purification

Application

Dilution Ratio	WB 1:500-1:2000,IHC 1:100-1:300,ICC/IF 1:200-1:1000,ELISA 1:10000-1:20000
Molecular Weight	44kDa

Antigen Information

Gene Name	CDC37
Alternative Names	CDC37; CDC37A; Hsp90 co-chaperone Cdc37; Hsp90 chaperone protein kinase-targeting subunit; p50Cdc37
Gene ID	11140.0
SwissProt ID	Q16543
Immunogen	The antiserum was produced against synthesized peptide derived from human CDC37. AA range:1-50

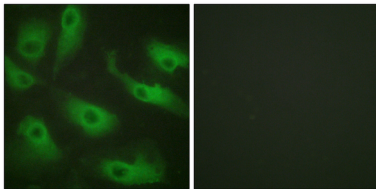
Background

The protein encoded by this gene is highly similar to Cdc 37, a cell division cycle control protein of *Sacchromyces cerevisiae*. This protein is a molecular chaperone with specific function in cell signal transduction. It has been shown to form complex with Hsp90 and a variety of protein kinases including CDK4, CDK6, SRC, RAF-1, MOK, as well as eIF2 alpha kinases. It is thought to play a critical role in directing Hsp90 to its target kinases. [provided by RefSeq, Jul 2008],function:Co-chaperone that binds to numerous kinases and promotes their interaction with the Hsp90 complex, resulting in stabilization and promotion of their activity.,PTM:Constitutively sumoylated by UBE2L.,similarity:Belongs to the CDC37 family.,subunit:Forms a complex with Hsp90. Interacts with AR, CDK4, CDK6, EIF2AK1 and RB1.,

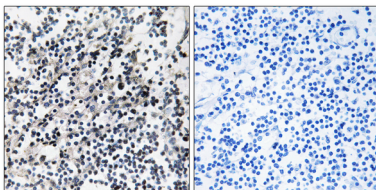
Research Area

PI3K/Akt

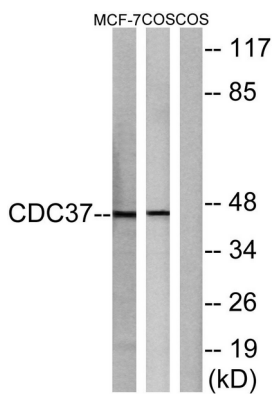
Image Data



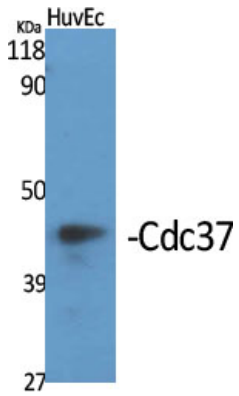
Immunofluorescence analysis of HeLa cells, using CDC37 Antibody. The picture on the right is blocked with the synthesized peptide.



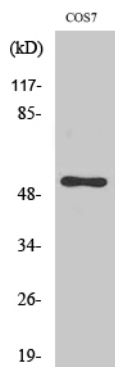
Immunohistochemistry analysis of paraffin-embedded human placenta tissue, using CDC37 Antibody. The picture on the right is blocked with the synthesized peptide.



Western blot analysis of lysates from MCF-7 and COS7 cells, using CDC37 Antibody. The lane on the right is blocked with the synthesized peptide.



Western Blot analysis of various cells using Cdc37 Polyclonal Antibody



Western Blot analysis of MCF7 cells using Cdc37 Polyclonal Antibody