
Product Name: Cdc25C Rabbit Polyclonal Antibody**Catalog #: APRab08508**

For research use only.

Summary

Description	Rabbit polyclonal Antibody
Host	Rabbit
Application	WB,IHC,ICC/IF,ELISA
Reactivity	Human,Rat,Mouse
Conjugation	Unconjugated
Modification	Unmodified
Isotype	IgG
Clonality	Polyclonal
Form	Liquid
Concentration	1mg/ml
Storage	Aliquot and store at -20°C (valid for 12 months). Avoid freeze/thaw cycles.
Shipping	Ice bags
Buffer	Liquid in PBS containing 50% glycerol, 0.5% protective protein and 0.02% New type preservative N.
Purification	Affinity purification

Application

Dilution Ratio	WB 1:500-1:2000,IHC 1:100-1:300,ICC/IF 1:50-1:200,ELISA 1:20000-1:40000
Molecular Weight	53kDa

Antigen Information

Gene Name	CDC25C
Alternative Names	CDC25C; M-phase inducer phosphatase 3; Dual specificity phosphatase Cdc25C
Gene ID	995.0
SwissProt ID	P30307
Immunogen	The antiserum was produced against synthesized peptide derived from human CDC25C. AA range:183-232

Background

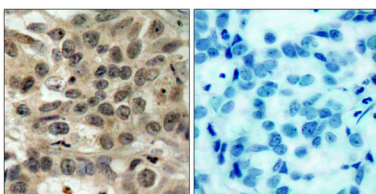
cell division cycle 25C(CDC25C) Homo sapiens This gene encodes a conserved protein that plays a key role in the regulation of

cell division. The encoded protein directs dephosphorylation of cyclin B-bound CDC2 and triggers entry into mitosis. It also suppresses p53-induced growth arrest. Multiple alternatively spliced transcript variants of this gene have been described. [provided by RefSeq, Dec 2015],catalytic activity:Protein tyrosine phosphate + H(2)O = protein tyrosine + phosphate.,developmental stage:Expressed predominantly in G2 phase.,function:Functions as a dosage-dependent inducer in mitotic control. It is a tyrosine protein phosphatase required for progression of the cell cycle. It directly dephosphorylates CDC2 and activate its kinase activity.,PTM:Phosphorylated by CHK1 on Ser-216. This phosphorylation creates a binding site for 14-3-3 protein and inhibits the phosphatase.,similarity:Belongs to the MPI phosphatase family.,similarity:Contains 1 rhodanese domain.,subunit:Interacts with HIV-1 Vpr, thereby inactivating CDC25C phosphatase activity.,

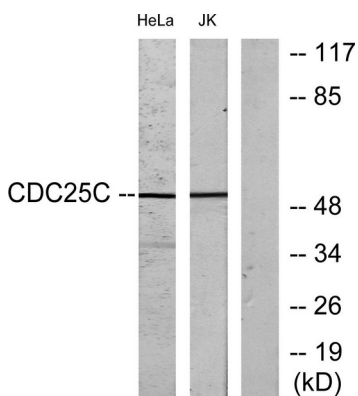
Research Area

Cell_Cycle_G1S;Cell_Cycle_G2M_DNA;Oocyte meiosis;Progesterone-mediated oocyte maturation;

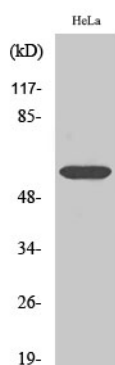
Image Data



Immunohistochemistry analysis of paraffin-embedded human breast carcinoma tissue, using CDC25C Antibody. The picture on the right is blocked with the synthesized peptide.



Western blot analysis of lysates from HeLa and Jurkat cells, using CDC25C Antibody. The lane on the right is blocked with the synthesized peptide.



Western Blot analysis of various cells using Cdc25C Polyclonal Antibody