

---

**Product Name: CD85g Rabbit Polyclonal Antibody****Catalog #: APRab08475**

For research use only.

**Summary**

<b>Description</b>	Rabbit polyclonal Antibody
<b>Host</b>	Rabbit
<b>Application</b>	WB,IHC,ICC/IF,ELISA
<b>Reactivity</b>	Human,Rat,Mouse
<b>Conjugation</b>	Unconjugated
<b>Modification</b>	Unmodified
<b>Isotype</b>	IgG
<b>Clonality</b>	Polyclonal
<b>Form</b>	Liquid
<b>Concentration</b>	1mg/ml
<b>Storage</b>	Aliquot and store at -20°C (valid for 12 months). Avoid freeze/thaw cycles.
<b>Shipping</b>	Ice bags
<b>Buffer</b>	Liquid in PBS containing 50% glycerol, 0.5% protective protein and 0.02% New type preservative N.
<b>Purification</b>	Affinity purification

**Application**

<b>Dilution Ratio</b>	WB 1:500-1:2000,IHC 1:100-1:300,ICC/IF 1:50-1:200,ELISA 1:10000-1:20000
<b>Molecular Weight</b>	55kDa

**Antigen Information**

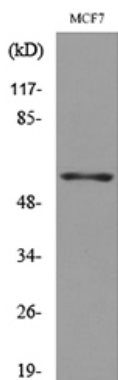
<b>Gene Name</b>	LILRA4
<b>Alternative Names</b>	LILRA4; ILT7; Leukocyte immunoglobulin-like receptor subfamily A member 4; CD85 antigen-like family member G; Immunoglobulin-like transcript 7; ILT-7; CD85g
<b>Gene ID</b>	23547.0
<b>SwissProt ID</b>	P59901
<b>Immunogen</b>	The antiserum was produced against synthesized peptide derived from the Internal region of human LILRA4. AA range:391-440

**Background**

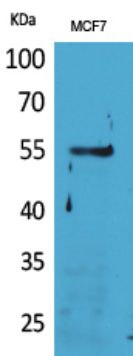
This gene encodes an immunoglobulin-like cell surface protein that is expressed predominantly on plasmacytoid dendritic cells (PDCs) and modulates the function of these cells in the immune response. Expression of this gene is downregulated by interleukin 3 (IL3). This gene is one of a cluster of highly related genes located at chromosomal region 19q13.4. [provided by RefSeq, Jan 2015],function:May act as receptor for class I MHC antigens. Ligand binding leads to the activation of eosinophils and to the release of RNASE2, IL4 and leukotriene C4.,similarity:Contains 4 Ig-like C2-type (immunoglobulin-like) domains.,tissue specificity:Detected on eosinophils, neutrophils and monocytes.,

## Research Area

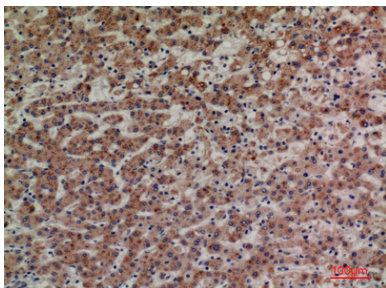
## Image Data



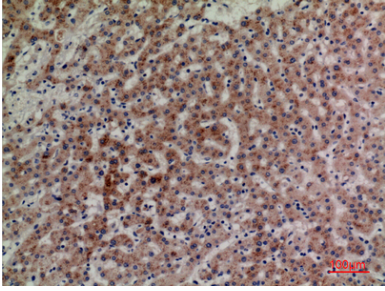
Western blot analysis of lysate from MCF7 cells, using LILRA4 Antibody.



Western Blot analysis of MCF7 cells using CD85g Polyclonal Antibody.. Secondary antibody was diluted at 1:20000



Immunohistochemical analysis of paraffin-embedded human-liver, antibody was diluted at 1:100



Immunohistochemical analysis of paraffin-embedded human-liver, antibody was diluted at 1:100