

**Product Name: CD52 Rabbit Polyclonal Antibody****Catalog #: APRab08414**

For research use only.

**Summary**

<b>Description</b>	Rabbit polyclonal Antibody
<b>Host</b>	Rabbit
<b>Application</b>	IHC, ICC/IF, ELISA
<b>Reactivity</b>	Human, Rat, Mouse
<b>Conjugation</b>	Unconjugated
<b>Modification</b>	Unmodified
<b>Isotype</b>	IgG
<b>Clonality</b>	Polyclonal
<b>Form</b>	Liquid
<b>Concentration</b>	1mg/ml
<b>Storage</b>	Aliquot and store at -20°C (valid for 12 months). Avoid freeze/thaw cycles.
<b>Shipping</b>	Ice bags
<b>Buffer</b>	Liquid in PBS containing 50% glycerol, 0.5% protective protein and 0.02% New type preservative N.
<b>Purification</b>	Affinity purification

**Application**

<b>Dilution Ratio</b>	IHC 1:50-1:200, ICC/IF 1:50-1:200, ELISA 1:10000-1:20000
<b>Molecular Weight</b>	15-20kDa

**Antigen Information**

<b>Gene Name</b>	CD52 CDW52 HE5
<b>Alternative Names</b>	CAMPATH-1 antigen (CDw52; Cambridge pathology 1 antigen; Epididymal secretory protein E5; Human epididymis-specific protein 5; He5; CD antigen CD52)
<b>Gene ID</b>	1043.0
<b>SwissProt ID</b>	P31358
<b>Immunogen</b>	Synthetic peptide from human protein at AA range: 20-50

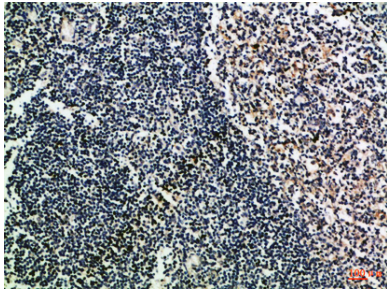
**Background**

function: May play a role in carrying and orienting carbohydrate, as well as having a more specific role., function: May play a role

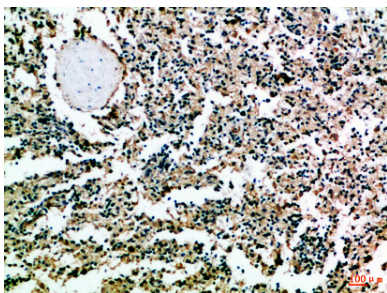
in carrying and orienting carbohydrate, as well as having a more specific role.,

## Research Area

### Image Data



Immunohistochemical analysis of paraffin-embedded Human-tonsil, antibody was diluted at 1:100



Immunohistochemical analysis of paraffin-embedded Human-spleen, antibody was diluted at 1:100