

---

**Product Name: CD32-B/C Rabbit Polyclonal Antibody****Catalog #: APRab08368**

For research use only.

**Summary**

<b>Description</b>	Rabbit polyclonal Antibody
<b>Host</b>	Rabbit
<b>Application</b>	WB,ELISA
<b>Reactivity</b>	Human,Rat,Mouse
<b>Conjugation</b>	Unconjugated
<b>Modification</b>	Unmodified
<b>Isotype</b>	IgG
<b>Clonality</b>	Polyclonal
<b>Form</b>	Liquid
<b>Concentration</b>	1mg/ml
<b>Storage</b>	Aliquot and store at -20°C (valid for 12 months). Avoid freeze/thaw cycles.
<b>Shipping</b>	Ice bags
<b>Buffer</b>	Liquid in PBS containing 50% glycerol, 0.5% protective protein and 0.02% New type preservative N.
<b>Purification</b>	Affinity purification

**Application**

<b>Dilution Ratio</b>	WB 1:500-1:2000,ELISA 1:10000-1:20000
<b>Molecular Weight</b>	35kDa

**Antigen Information**

<b>Gene Name</b>	FCGR2B/FCGR2C FCGR2B; CD32; FCG2; IGFR2; Low affinity immunoglobulin gamma Fc region receptor II-b;
<b>Alternative Names</b>	IgG Fc receptor II-b; CDw32; Fc-gamma RII-b; Fc-gamma-RIIb; FcRII-b; CD32; FCGR2C; CD32; FCG2; IGFR2;Low affinity immunoglobulin gamma Fc region receptor II-c; IgG Fc receptor II-c; CDw32; Fc-gamma RII-c; Fc-gamma-RIIc; FcRII-c; CD32
<b>Gene ID</b>	2213.0
<b>SwissProt ID</b>	P31994
<b>Immunogen</b>	The antiserum was produced against synthesized peptide derived from the Internal region of human FCGR2B/C. AA range:141-190

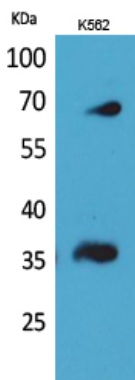
## Background

Low affinity immunoglobulin gamma Fc region receptor II-b/Low affinity immunoglobulin gamma Fc region receptor II-c encoded by FCGR2B is a low affinity receptor for the Fc region of immunoglobulin gamma complexes. The encoded protein is involved in the phagocytosis of immune complexes and in the regulation of antibody production by B-cells. Variations in this gene may increase susceptibility to systemic lupus erythematosus (SLE). Several transcript variants encoding different isoforms have been found for this gene. immune response,

## Research Area

B\_Cell\_Antigen;Fc gamma R-mediated phagocytosis;Systemic lupus erythematosus;

## Image Data



Western Blot analysis of K562 cells using CD32-B/C Polyclonal Antibody.. Secondary antibody was diluted at 1:20000