

**Product Name: CD300b Rabbit Polyclonal Antibody****Catalog #: APRab08340**

For research use only.

**Summary**

|                      |   |
|----------------------|---|
| <b>Description</b>   | Rabbit polyclonal Antibody  |
| <b>Host</b>          | Rabbit  |
| <b>Application</b>   | IHC,ICC/IF,ELISA  |
| <b>Reactivity</b>    | Human,Rat,Mouse   |
| <b>Conjugation</b>   | Unconjugated  |
| <b>Modification</b>  | Unmodified  |
| <b>Isotype</b>       | IgG   |
| <b>Clonality</b>     | Polyclonal  |
| <b>Form</b>          | Liquid  |
| <b>Concentration</b> | 1mg/ml  |
| <b>Storage</b>       | Aliquot and store at -20°C (valid for 12 months). Avoid freeze/thaw cycles.                       |
| <b>Shipping</b>      | Ice bags  |
| <b>Buffer</b>        | Liquid in PBS containing 50% glycerol, 0.5% protective protein and 0.02% New type preservative N. |
| <b>Purification</b>  | Affinity purification   |

**Application**

**Dilution Ratio** IHC 1:50-1:200,ICC/IF 1:50-1:200,ELISA 1:10000-1:20000

**Molecular Weight**

**Antigen Information**

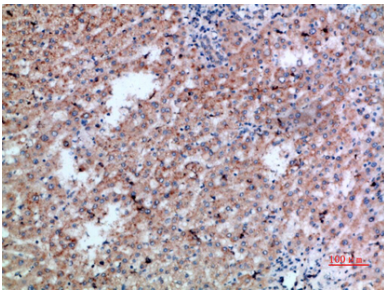
|                          |  |
|--------------------------|--|
| <b>Gene Name</b>         | CD300LB CD300B CLM7 CMRF35A2 IREM3 LMIR5 TREM5 UNQ2530/PRO6029<br>CMRF35-like molecule 7 (CLM-7;CD300 antigen-like family member B;CMRF35-A2;Immune          |
| <b>Alternative Names</b> | receptor expressed on myeloid cells 3;IREM-3;Leukocyte mono-Ig-like receptor 5;Triggering<br>receptor expressed on myeloid cells 5;TREM-5;CD antigen CD300b) |
| <b>Gene ID</b>           | 124599.0   |
| <b>SwissProt ID</b>      | A8K4G0   |
| <b>Immunogen</b>         | Synthetic peptide from human protein at AA range: 61-110   |

**Background**

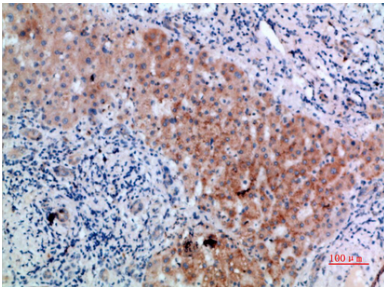
CD300LB is a nonclassical activating receptor of the immunoglobulin (Ig) superfamily expressed on myeloid cells (Martinez-Barriocanal and Sayos, 2006 [PubMed 16920917]).[supplied by OMIM, Mar 2008],function:Acts as an activating immune receptor through its interaction with ITAM-bearing adapter TYROBP, and also independently by recruitment of GRB2.,PTM:Phosphorylation on Tyr-188 by FYN is required for interaction with GRB2.,similarity:Belongs to the CD300 family.,similarity:Contains 1 Ig-like V-type (immunoglobulin-like) domain.,subunit:Interacts with TYROBP, which enhances cell surface expression and activation properties. Interacts with GRB2 in the presence of FYN.,tissue specificity:Expressed exclusively in myeloid lineages.,

## Research Area

### Image Data



Immunohistochemical analysis of paraffin-embedded human-liver-cancer, antibody was diluted at 1:200



Immunohistochemical analysis of paraffin-embedded human-liver-cancer, antibody was diluted at 1:200